

RESEARCH

Open Access



Semantic representation of neural circuit knowledge in *Caenorhabditis elegans*

Sharan J. Prakash¹ , Kimberly M. Van Auken¹ , David P. Hill² and Paul W. Sternberg^{1*}

Abstract

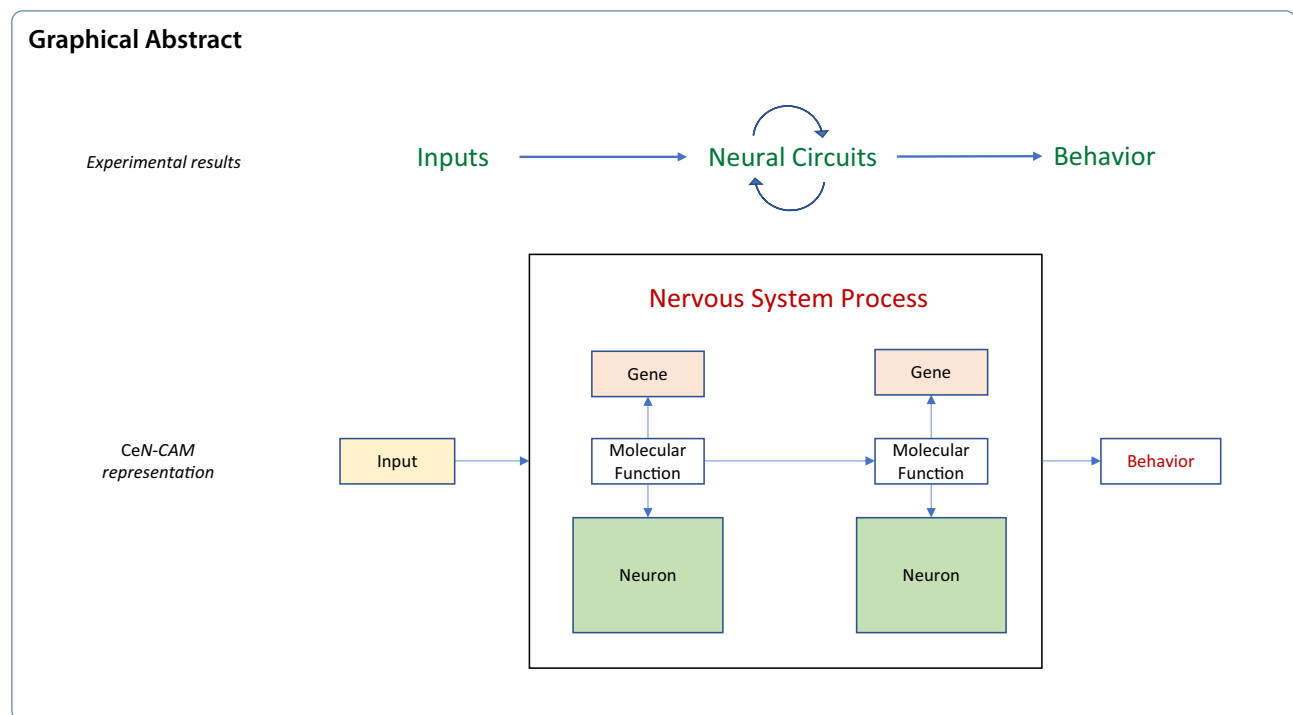
In modern biology, new knowledge is generated quickly, making it challenging for researchers to efficiently acquire and synthesise new information from the large volume of primary publications. To address this problem, computational approaches that generate machine-readable representations of scientific findings in the form of knowledge graphs have been developed. These representations can integrate different types of experimental data from multiple papers and biological knowledge bases in a unifying data model, providing a complementary method to manual review for interacting with published knowledge. The Gene Ontology Consortium (GOC) has created a semantic modelling framework that extends individual functional gene annotations to structured descriptions of causal networks representing biological processes (Gene Ontology–Causal Activity Modelling, or GO–CAM). In this study, we explored whether the GO–CAM framework could represent knowledge of the causal relationships between environmental inputs, neural circuits and behavior in the model nematode *C. elegans* [*C. elegans* Neural–Circuit Causal Activity Modelling (CeN–CAM)]. We found that, given extensions to several relevant ontologies, a wide variety of author statements from the literature about the neural circuit basis of egg-laying and carbon dioxide (CO₂) avoidance behaviors could be faithfully represented with CeN–CAM. Through this process, we were able to generate generic data models for several categories of experimental results. We also discuss how semantic modelling may be used to functionally annotate the *C. elegans* connectome. Thus, Gene Ontology-based semantic modelling has the potential to support various machine-readable representations of neurobiological knowledge.

Keywords Knowledge Graph, Semantic Modeling, Neurobiology, *Caenorhabditis elegans*, Gene Ontology

*Correspondence:

Paul W. Sternberg
pws@caltech.edu

Full list of author information is available at the end of the article



1 Introduction

1.1 *Caenorhabditis elegans* as a model for systems neuroscience

A major goal of modern neuroscience is to explain the relationship between environmental inputs and complex behaviors in terms of the properties of their underlying neural systems. *C. elegans* has been a productive model for neuroscience due to its wide range of easily measured behaviors, genetic tractability, and highly stereotyped anatomy. The function of individual *C. elegans* neurons has been studied by a variety of methods, including selective neuron ablation, either with laser microbeam irradiation [8, 9, 18, 49] or genetically encoded cell killing [34, 65]. These physical studies, complemented by genetic screens resulting in mutant animals with distinct behavioral and neuronal phenotypes, have implicated specific neurons in behaviors [7] and identified genes and neurons required for responses to environmental or pharmacological inputs [72]. Technological advances, such as cell-specific application of optogenetic and chemical perturbations [36, 55] in combination with calcium imaging of individual neurons [22], have begun to outline the causal relationships between neurons, both locally and via long-range connections [60], while calcium imaging allows the effect of physical inputs on neural activity to be determined. Thus, causal relationships can be traced from inputs through neural circuits to behavior. In addition, traditional molecular genetic methods enable the biochemical basis of these

causal relationships to be elucidated. Understanding molecular participants is particularly important for the functional description of extra-synaptic connections, because they cannot be described by anatomy or gene expression alone, yet they exert powerful effects on neuronal activity [6, 11, 51]. In combination, the physical and molecular data allow detailed description of *C. elegans* neural circuits underlying particular behaviors.

1.2 The GO-CAM framework can be used to represent causal relationships in biology

Given the volume of biological knowledge, a method to integrate diverse types of data into causal models of biological systems, expressed in a common, machine-readable language, is highly desirable. A promising method suitable for this application has been developed. The Gene Ontology (GO) Consortium has created a semantic modelling framework for annotating causal relationships between molecular activities in the context of functional gene annotation, known as GO-CAM (Gene Ontology Causal Activity Modelling) [70].

Semantic models (also known as knowledge graphs) are machine-readable representations of knowledge in a given field, in which the edges of the graph describe the logical relationships between entities that comprise a field of study. In GO-CAM, curated knowledge of gene functions annotated using the Gene Ontology and other biologically relevant ontologies are used to create activity flow models of biological systems (Fig. 1) [44]. In

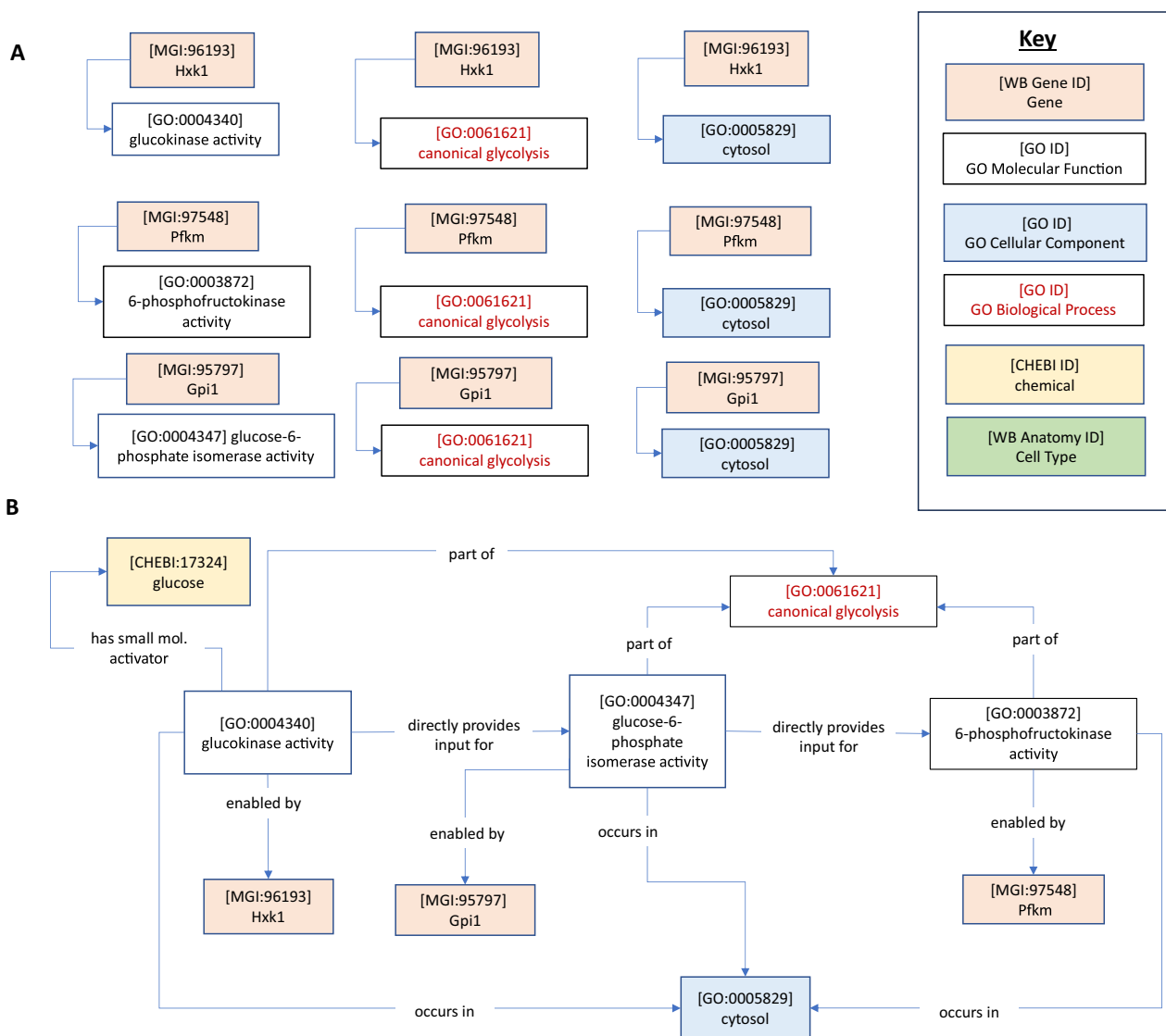


Fig. 1 Standard GO annotations and GO–CAMs. **A** Standard GO annotations link genes to GO Molecular Functions, GO Biological processes or GO Cellular Component terms. **B** Partial GO–CAM of canonical glycolysis. Gene Ontology–Causal Activity Models (GO–CAMs) arrange GO annotations into structured models of biological processes by causally linking GO Molecular Functions that make up a process. Edges represent relations which may connect nodes according to the GO–CAM data model

these graphs, the logical relationships are described via a formalism known as a semantic triple (subject–predicate–object).¹ These models can be thought of as compositions of assertions in the form of semantic triples. For instance, the assertion “[*G-protein coupled receptor activity* (GO: 0004930) *has input* [*2-heptanone* (CHEBI: 5672)]” is a semantic triple that could be included in a GO–CAM. The semantic triple format allows edges to connect many different kinds of entities, including

anatomy terms and biological processes. For instance, “[*glucose-6-phosphate isomerase activity* (GO: 0004374)] *part of* [*canonical glycolysis* (GO: 0061621)] *occurs in* [*cytosol* (GO: 0005829)]” is a pair of semantic triples that connects a GO molecular function to both a higher level biological process and an anatomical compartment. The Gene Ontology itself follows a hierarchical structure described with semantic triples, e.g., “[*G-protein coupled receptor activity* (GO: 0004930)] *is a* [*transmembrane signalling receptor* (GO: 0004888)]” (here the relation ‘*is a*’ describes a child–parent relationship). This formalism allows different kinds of entities to be connected to one

¹ Predicate and relation have the same meaning (predicate is the formal term for describing a triple).

another in a machine-readable format, allowing combinatorial queries and other computational analyses.

In GO–CAM, curated knowledge of gene functions annotated using the Gene Ontology and other biologically relevant ontologies are used to create knowledge graphs of biological systems (Fig. 1). This framework extends traditional gene function annotation by capturing the causal flow of molecular activities, e.g., protein kinase activity or ion channel activity, using causal relations from the Relations Ontology (RO) and representing these interactions in the context of the relevant biological process and anatomy [63] (Box 1). These causal networks allow more in-depth computational analyses of a system than a set of stand-alone associations between genes and ontology terms, and have the potential to bridge the gap between biochemical and anatomical networks. Here, we explored whether the causal GO–CAM framework can enable the representation of the causal relationships between environmental inputs, neural circuits and behavior at varying levels of detail.

1.2.1 Box 1: Commonly used RO Relations in GO–CAM

- Causally upstream of or within [RO:0002418]:
 - Used to model edges where the relationship may be either causal or mereological (part/whole), i.e. is a parent of causally upstream of and part of relations
- Causally upstream of, positive effect [RO:002304]/causally upstream of, negative effect [RO:002305]:
 - Used to model causal interactions between GO molecular functions and/or GO biological processes
- Positively regulates [RO:0002213]/negatively regulates [RO:0002212]:
 - More specific versions of the causally upstream of relations; can distinguish regulated causal effects from constitutive causal effects
- Part of/has part [BFO:0000050/BFO:0000051]:
 - Mereological relation used to connect instances of GO molecular functions to instances of the GO biological processes that contain them (GO biological processes may also be connected with this relation)
- Enabled by/enables [RO:0002333/ RO:0002327]
 - Used to connect GO molecular functions to their enabling genes
- Has small molecule activator/is a small molecule activator of [RO:0012001]/[RO:0012005]

- Used to connect chemicals from the CheBI ontology to biochemical functions, e.g. cell surface receptor activity or catalytic activities of enzymes
- Has input [RO:0002233]
- Various uses, e.g. to connect chemicals from the CheBI ontology to biological processes
- Has output [RO:0002234]
- Similar to [RO:0002233], e.g. to model a gene (i.e. gene product) as an output from an instance of gene expression
- Occurs in [BFO: 0000066]:
 - Used to connect GO molecular functions and GO biological processes to the anatomical entities (i.e. cells and sub-cellular locations) in which they occur.

1.3 CeN–CAM: GO–CAM representation of *C. elegans* neurobiological knowledge

As for standard GO annotations, assertions in a GO–CAM are supported by evidence statements, ideally experimental evidence from the published literature [3, 30, 69]. To adapt the GO–CAM framework for modelling neurobiological statements about *C. elegans* egg-laying and carbon dioxide (CO₂)-sensing behaviors, we selected a subset of relevant papers from the *C. elegans* bibliography and identified author statements that could be used to support construction of semantically rigorous, causal models. For the egg-laying circuit, these statements largely involve interactions among interneurons, motor neurons, and the egg-laying apparatus, e.g., vulval muscles and epithelia. The CO₂ avoidance circuit is focused on sensory neurons, their interaction with the environment, and subsequent effects on locomotory behavior.

2 Materials and methods

To model neurobiological processes, we began by collecting author statements from published references. To ensure that our findings were broadly applicable, we collected statements from the literature on two circuits, one centred on interneurons and motor neurons (egg-laying) and one centred on sensory neurons (CO₂ avoidance). For the egg-laying circuit we compiled 20 papers, and for CO₂ avoidance, 8 papers. We chose statements manually, according to a few criteria. To begin with, we chose statements that provided a clear interpretation and that we, therefore, expected to be straightforward to model with

Table 1 Biological ontologies used to generate CeN–CAM models

GO–CAM element	Ontology	Example
Molecular activity	GO Molecular Function	serotonin receptor activity (GO: 0099589)
Biological process	GO Biological Process	membrane depolarization (GO: 0051899)
Location	GO Cellular Component	cytosol (GO: 0005829)
Cell	WormBase Anatomy Ontology	HSN (WBbt: 0006830)
Active entity (gene/gene product)	WormBase	<i>tph-1</i> (WBGene00006600)
Chemical inputs	Chemical Entities of Biological Interest (ChEBI)	dioxygen (ChEBI: 15379)
Relations arrows	Relations Ontology (RO), Basic Formal Ontology (BFO)	occurs in (RO_0002479)
Evidence codes	Evidence and Conclusions Ontology (ECO)	optogenetic evidence used in manual assertion (ECO: 0006033)
Environmental conditions	Phenotype and Trait Ontology (PATO) Environmental Conditions, Treatments and Exposure Ontology (ECTO)	increased duration (PATO_0000498)

GO–CAM. Later, we selected statements describing phenomena (e.g., multi-sensory integration, neuromodulation) that were missing from the initial data set.

We defined an author statement as text describing: (i) either an experiment or hypotheses, (ii) an experimental observation or result, and (iii) a clear biological interpretation of the result. These typically comprised a paragraph. We then attempted to model the interpretation, along with supporting evidence using the Evidence and Conclusion Ontology (ECO) [30] wherever possible. We avoided modelling speculative suggestions that went beyond the supporting evidence.

For each author statement, we attempted to generate one or more simple assertions (i.e., semantic triples or subject–predicate–object) that accurately modelled the author statement using classes from biological ontologies (Table 1), including the GO [3, 69], the Chemicals of Biological Interest ontology (ChEBI) [35], the Environmental Conditions, Treatments and Exposures Ontology (ECTO) [19], and the *C. elegans* Cell and Anatomy Ontology (WBbt) [45]. In a semantic triple, these classes are connected by relations from the Relations Ontology [63] (Box 1).

We collected author statements and their corresponding semantic triples into a dataframe, such that the triple representation can be read from left to right (unless otherwise specified). Additional file 2: Table S1, Additional file 3: Table S3 provide the full list of author statements that were modelled for the egg-laying (91 unique statements comprising 128 entries from 20 papers) and CO₂-avoidance circuits (59 unique statements comprising 99 entries from 8 papers), respectively. Table 2 enumerates detailed categories of biological phenomena captured by this approach. We used this categorization process to determine whether existing ontologies contained a sufficiently rich set of classes and whether existing RO terms were adequate to describe the relations

between classes. Where applicable, we generated definitions for required novel classes and their necessary parents (Table 3). We then created illustrations of several useful examples.

In generating our empirical models, we sought as far as possible to ensure that all relations followed the conventions of the GO–CAM data model. Namely, two GO Molecular Functions can be linked by causal relations, whereas a GO Molecular Function (MF) and a GO Biological Process (BP) are linked by mereological relations (e.g., *part of*). In addition, two BPs can be linked by mereological relations when one BP is part of another BP (i.e., a subprocess of the other). We also found it necessary, in some cases, to link distinct BPs using causal relations to accurately describe the complexity of the biology. For instance, one neuron activating another via optogenetics can be modelled by a *membrane depolarization* process causally upstream of another *membrane depolarization* process (e.g., Fig. 4A). We sought to include whichever MFs or BPs were implied by an author statement, even if the gene was missing, or the BP was not explicitly discussed, to denote missing information. We chose the most specific relation or GO term that we felt was justified in the circumstances. For instance, when modelling individual author statements, we used *causally upstream of*, but when modelling compilations of statements from separate papers, we were able to use the child term *positively regulates*. In generating our generic template models, we chose the highest level relations and GO terms that could reasonably represent a given statement category.

3 Results

3.1 CeN–CAM: GO–CAM provides a framework to model neurobiological statements

As a first step in converting information from the scientific literature to a causal model using the GO–CAM

Table 2 Categories of neurobiological phenomena modelled with GO–CAM

Neuronal basis of behavior	Receptor or G-protein activity regulates behavior or cell activity
Neuron regulates behavior	G protein activity in specific neuron regulates behavior
Cellular process regulates behavior	GPCR regulates G-protein-activity in specific neuron to regulate behavior
Neuronal activity regulates behavior	Neuromodulation of specific neuron by G protein signaling
Neuronal activity dependent secretion from identified neuron regulates behavior	G protein activity regulates gene expression
Neuronal activity dependent neurotransmitter secretion	G protein activity regulates gene expression cell autonomously
Neuron–neuron interaction	G protein activity regulates neurotransmitter biosynthesis
Activity of Neuron A regulates activity of Neuron B	G protein activity regulates phospholipase activation
Activity of Neuron A regulates activity of Neuron B (synapse-dependent)	G protein signaling activity regulates neuronal activity cell autonomously
Mechanical stimulation of Neuron A regulates activity of Neuron B	GPCR regulates ion channel
Negative autoregulation of neuronal activity	Ion channel regulates neuronal activity via GPCR
Neural activity depends on extra-synaptic signaling	G protein activity regulates neurotransmitter biosynthesis cell autonomously
Environmental influence on behavior or cell activity	GPCR regulates G-protein activity
Environmental input regulates behavior	G protein activity regulates neurotransmitter biosynthesis
Environmental input regulates neuronal activity	Neuromodulation of specific neuron by G protein signaling
Environmental condition regulates neuronal activity	Receptor activity regulates neuronal activity cell autonomously
Environmental condition regulates behavior	Cellular process
Mechanical process regulates neural activity	Neurotransmitter biosynthesis
Environmental input regulates behavior via defined neuron	Neurotransmitter signaling pathway affects behavior
Environmental input regulates gene expression	Biochemical process regulates neural activity
Receptor–ligand interaction	Dense core vesicle exocytosis from identified neuron regulates behavior
Receptor–ligand interaction	Gene activity regulates neural activity
Neurotransmitter regulates neuronal activity via ion channel	Gene activity in identified neuron regulates behavior
Neurotransmitter regulates behavior via specific receptor	Dense core vesicle exocytosis regulates behavior
Neurotransmitter regulates behavior via ion channel in identified neuron	Neuropeptide signaling pathway affects behavior
Neurotransmitter regulates behavior via specific receptor in identified neuron	Neuropeptide signaling pathway affects behavior via identified cell
Neurotransmitter affects identified receptor class	Regulation of gene expression in identified neuron
Ion channel activity regulates behavior or cell activity	Neurotransmitter/neuropeptide activity regulates behavior or cell activity
Ion channel regulates neural activity	Neurotransmitter biosynthesis from identified source neuron regulates behavior
Neuromodulation of specific neuron by ion channel activity	Neurotransmitter biosynthesis regulates behavior
Ion channel regulates membrane potential	Neuropeptide from specific neuron regulates behavior
Ion channel activity in defined neuron regulates behavior	Neurotransmitter activity depends on ion channel
Ion channel activity regulates behavior	Neurotransmitter regulates behavior
Nervous system process	Neurotransmitter regulates neuronal activity
Adaptation to chemical stimulus	Regulation of neurotransmitter activity by upstream neuropeptide activity
Co-ordination of locomotion and neural activity to influence behavior	Regulation of secretion by upstream neuropeptide activity

framework, we created semantic triples to represent author statements (Additional file 2: Table S1 and Additional file 3 Table S2). As an example, a statement by Banerjee et al. describing the results of an optogenetic experiment that activates membrane depolarization in *uv1* neurons shows that the *uv1* cells control the duration of egg deposition during egg-laying behavior. We created a semantic triples to represent this finding: [*membrane depolarization* (GO: 0051899)] *occurs in*

[*uv1* (WBbt: 0006791)] *part of* [*negative regulation of egg deposition* (GO: proposed)] *part of* [*egg-laying behavior* (GO: 0018991)] (Additional file 2: Table S1, local identifier EL12). In creating triples for 123 egg-laying and 98 CO₂ avoidance author statements, we found that the set of relations used in the GO–CAM data model were sufficient to model all author statements in our data set. However, we required new classes in several other ontologies (the Gene Ontology (GO), the Evidence and

Table 3 Definitions and classification for proposed new GO classes

Category	Proposed modified classes	modification	Classification
GO Biological Process	<i>Oviposition (GO: 0018991)</i>	Change primary term name to synonym 'egg-laying behavior' New definition: the muscle system process resulting in the deposition of eggs (either fertilized or not) upon a surface or into a medium, such as water	is a muscle system process (GO: 0003012); part of 'egg-laying behavior'
GO Biological Process	<i>Behavior (GO: 0007610)</i>	New classification (see right)	is a response to stimulus (GO: 0050896)
Category	Proposed new class	Definitions	Classification
GO Biological Process	Egg deposition	The multicellular organismal reproductive process that results in the movement of an egg from within an organism into the external environment	is a reproductive behavior (GO: 00198098); part of oviposition/egg-laying behavior (GO: 0018991)
GO Biological Process	Positive regulation of egg deposition	Any process that positively regulates the rate, frequency or extent of egg deposition	is a nervous system process (GO: 0050877); part of oviposition/egg-laying behavior (GO: 0018991)
GO Biological Process	Negative regulation of egg deposition	Any process that negatively regulates the rate, frequency or extent of egg deposition	is a nervous system process (GO: 0050877); part of oviposition/egg-laying behavior (GO: 0018991)
GO Biological Process	Neuron-to-neuron extra-synaptic peptide signaling	Any process by which a cellular process within one neuron influences a cellular process within another neuron via a secreted gene product, where this secretion occurs independently of synapses	is a neuron-to-neuron chemical signaling process
GO Biological Process	Neuron-to-neuron chemical signaling	Any process by which a cellular process within one neuron influences a cellular process within another neuron via a secreted molecule	is a cell–cell signaling (GO: 0007267) process
GO Biological Process	Behavioral response to carbon dioxide	The behavior of an organism in response to a carbon dioxide stimulus	is a behavior (GO: 007610); is a response to carbon dioxide (GO: 0010037)
GO Biological Process	Carbon dioxide avoidance behavior	The behavioral response to carbon dioxide which results in the directed movement of a motile cell or organism toward a lower carbon dioxide concentration	is a negative chemotaxis (GO: 0050919); is a behavioral response to carbon dioxide
GO Biological Process	Negative regulation of carbon dioxide avoidance behavior	Any process that negatively influences locomotory behavior directed away from a source or gradient of carbon dioxide	is a nervous system process (GO: 0050877); part of behavioral response to carbon dioxide
GO Biological Process	Positive regulation of carbon dioxide avoidance behavior	Any process that positively influences locomotory behavior directed away from a source or gradient of carbon dioxide	is a nervous system process (GO: 0050877); part of behavioral response to carbon dioxide
GO Biological Process	Adaptation of neuron to stimulus	Any process that results in an increased threshold for induction of neural activity due to prior exposure to the same stimulus	is a negative regulation of membrane depolarization (GO: 1904180)
GO Biological Process	Sensitization of neuronal response to stimulus	Any process that results in a reduced threshold for induction of neural activity due to prior exposure to the same stimulus	is a positive regulation of response to stimulus (GO: 0048584)
GO Biological Process	Sensitization of behavioral response to stimulus	Any process that results in a reduced threshold for induction of behavioral response due to prior exposure to the same stimulus	is a positive regulation of behavior (GO: 0048520)

Table 3 (continued)

Category	Proposed new class	Definitions	Classification
GO Biological Process	Sensory adaptation in behavioral response to stimulus	Any process that results in an increased threshold for induction of behavioral response due to prior exposure to the same stimulus	is a <i>negative regulation of behavior</i> (GO: 0048521)
GO Biological Process	Behavior co-ordination process	Any neural process that links the execution or cessation of one behavior to the induction or cessation of another behavior	is a <i>regulation of behavior</i> (GO: 0050795)
GO Biological Process	Signal integration process	Any nervous system process by which different types of input to the nervous system contribute in combination to a behavioral or physiological output	is a <i>nervous system process</i> (GO: 0050877)
GO Molecular Function	CO ₂ receptor activity	Binding to and responding, e.g., by conformational change, to changes in the cellular level of carbon dioxide (CO ₂) or its dissociation products in water	is a <i>signaling receptor activity</i> (GO: 0038023)
ECO Evidence Class	Neuron chemical inhibition assay evidence used in manual assertion	A type of experimental phenotypic evidence that is used in a manual assertion, arising from experiments in which the output from a neuron is inhibited by a chemical	is a <i>experimental phenotypic evidence</i> (ECO: 00000059)
ECO Evidence Class	Synaptic transmission inhibition evidence used in manual assertion	A type of experimental phenotypic evidence, that is used in a manual assertion, arising from experiment in which neuron-to-neuron synaptic transmission is manipulated using inhibitors of synaptic transmission, that is used in a manual assertion	is a <i>experimental phenotypic evidence</i> (ECO: 00000059)
ECO Evidence Class	Mechanical perturbation evidence used in manual assertion	A type of experimental phenotypic evidence, that is used in a manual assertion, arising from experiment in which cellular responses are manipulated using mechanical force, that is used in a manual assertion	is a <i>experimental phenotypic evidence</i> (ECO: 00000059)
ECO Evidence Class	Long-term exposure or conditioning evidence used in manual assertion	A type of experimental phenotypic evidence, that is used in a manual assertion, arising from experimental treatment involving sustained exposure of an organism to one or more environmental conditions	is a <i>experimental phenotypic evidence</i> (ECO: 00000059)
ECTO Class	Exposure to increasing carbon dioxide	An exposure event involving the interaction of an exposure receptor to increasing amount of carbon dioxide	is a <i>exposure to chemical</i> (ECTO: 0000231)
ECTO Class	Exposure to decreasing carbon dioxide	An exposure event involving the interaction of an exposure receptor to increasing amount of carbon dioxide	is a <i>exposure to chemical</i> (ECTO: 0000231)

Conclusion Ontology (ECO), and the Environmental Conditions, Treatments and Exposures Ontology (ECTO) [19]) to describe some statements in both data sets (25/123 statements in the egg-laying data set, and 84/99 in CO₂ avoidance) (Table 3). These results show that author statements describing *C. elegans* neurobiology can be faithfully captured using the framework of the GO–CAM data model.

We also found it necessary to re-evaluate some existing definitions and classifications of biological processes under the GO class *behavior* (GO: 0007610). For example, since the primary term *oviposition* is a subclass of *reproductive behavior* (GO: 0019098) in GO and oviposition can be used to describe both the entire behavior of egg laying and to describe the actual deposition of an egg onto a substrate, we requested to switch the primary label of *oviposition* (GO: 0046662) with the GO synonym *egg-laying behavior*. We also requested a refinement of the definition of *egg-laying behavior* to ‘A reproductive behavior that results in the deposition of eggs (either fertilized or not) upon a surface or into a medium, such as water.’ In addition, we created a new term *egg deposition* (GO: 0160027), defined as ‘The multicellular organismal reproductive process that results in the movement of an egg from within an organism into the external environment.’ In this way, the mechanical process of *egg deposition* is clearly distinguished from *egg-laying behavior*, which includes its regulation by the nervous system. We requested new terms for the positive and negative regulation of egg deposition, defined as nervous system processes. In addition, we proposed definitions for new classes required to describe CO₂ avoidance, including *carbon dioxide avoidance behavior* and its parent *behavioral response to carbon dioxide* (Table 3).

Many statements describe findings from genetic perturbations, implicating specific pathways, whereas others, such as cell ablation, leave open a variety of genetic mechanisms by which a phenotype is manifested. Here, we describe the use of different relations and processes to refine models according to the range of conclusions available in each case.

3.2 Statement category: linking neurons, cellular and molecular processes, and behaviors

Fully elucidating functional neural circuits requires an understanding of the cells (e.g., neurons and muscles) involved in the behavior, the molecular basis of the behavior (e.g., the relevant gene products and their activities), and the coordinated relationships among them to affect the behavior. As with all biological processes, however, the full understanding of a neural circuit and a behavior is produced from individual,

granular observations that, together and over time, combine to complete the picture. Leading up to a complete understanding, we need to also have the ability to represent the current state of knowledge at the organismal, anatomical, cellular and molecular level. Thus, in our first category of statements, we aimed to capture atomized statements that link cells and genes to cellular and molecular level processes and those processes to a specific behavior.

A traditional experiment for linking neurons to behavior is to ablate a neuron of interest and observe behavioral effects, an experiment that gives us information at the cellular level [18]. When an ablation results in a behavioral change, it is interpreted that one or more processes (either in series or in parallel) occurring in that cell has a causal effect on the behavior (Table 4A). Since cell ablation disrupts unknown cellular processes, we chose to model this result using the high level GO biological process term *cellular process* (GO: 0009987), and the *occurs in* (BFO: 0000066) relation to contextualize the cellular process with respect to the ablated neuron. We then used the children of the broader causal relation *causally upstream of or within* (RO: 0002418) (or preferably a *positive* (RO: 0004047) or *negative* (RO: 0004046) effect child term) to tie the *cellular process* to a *nervous system process* (GO: 0050877). In the example shown in Fig. 2A (corresponding to the statement in Table 4A), this *nervous system process* corresponds to the Biological Process term *positive regulation of egg deposition*. We used the *part of* relation in cases, where more specific perturbations were made (e.g., neuronal activation or inhibition, genetic knockouts and rescues), allowing an assertion about the composition of the processes involved.

For an illustrative example of this distinction, it is useful to consider experiments from our collection that generated insights by deletion and cell-specific rescue of genes involved in neurotransmitter biosynthesis. We reasoned that since the biosynthesis can proceed even, while the neuron is at rest (i.e., independent of the induction of behavior), it should not be considered *part of* the asserted *nervous system process*, but *causally upstream of, positive effect* (RO: 0002304) (Fig. 2B, Table 4B) to a secretion process that is *part of* the *nervous system process* (on the assumption that this secretion depends on the depolarization of the neuron).

A more recent experimental technology for discerning the effect of neurons on behavior is optogenetic activation. In these experiments, a specific neuron is activated by opening the light-sensitive Channelrhodopsin ion channel, transgenically expressed in specific neurons of interest [33]. We modelled these results similar to cell ablation, except that in this case, we were able to say that the *membrane depolarization* that *occurs in* a specific

Table 4 Author statements collection A

Authors	Author statement
A Waggoner et al. [72]	"The roles of individual neurons in controlling the timing of egg-laying events can be determined with high precision by eliminating specific neurons by laser ablation and assaying the effect of the ablation on behavior. We, therefore, eliminated the neurons with prominent synaptic input to the egg-laying muscles to determine how their absence affected the timing of egg-laying events. We first investigated the involvement of the HSNs, a pair of serotonergic motor neurons that are required for efficient egg laying. By tracking the behavior of animals lacking both HSNs, we found that elimination of the HSNs did not qualitatively alter the pattern of egg laying: eggs were still laid in clusters, and the intervals between clusters and between egg-laying events within a cluster were still exponentially distributed. However, HSN ablation did cause a substantial lengthening of the inactive phase, which led to a slower overall rate of egg laying (Fig. 2A). Since loss of the HSNs decreased the frequency of egg-laying clusters (i.e., λ_2 was decreased; Table 1) but did not slow the egg-laying rate within these clusters (λ_1 was actually increased), these results suggest that the HSNs stimulate egg laying by inducing the active state."
B Bany et al. [5]	"Because the VC neurons appear to inhibit egg laying and are cholinergic, we tested whether the VCs release acetylcholine to inhibit egg laying. The VCs are the only cells of the egg-laying system that express the UNC-4 complex, CHA-1, and UNC-17 [48]; however, because unc-4, cha-1, and unc-17 are each expressed in other neurons, it was necessary to determine whether mutations in these genes cause hyperactive egg laying specifically attributable to their effects on the VC neurons. For this purpose, we expressed the unc-4, cha-1, or unc-17 cDNAs in the VC neurons and determined whether this rescued the hyperactive egg-laying defects of the corresponding mutants. To direct VC expression, we used a modified lin-11 promoter similar to that used to express GFP in Fig. 3A (see Materials and Methods). Expression of the unc-4 cDNA using this promoter rescued the hyperactive egg-laying defect of unc-4 mutants, returning the percentage of early stage eggs laid to near-wild-type levels (Fig. 4A). Furthermore, expressing the cha-1 cDNA in the VC neurons of cha-1 mutants also rescued their hyperactive egg-laying phenotype (Fig. 4B). Similar experiments with unc-17 gave analogous results (data not shown). Restoring the inhibition of egg laying by restoring the ability of the VC neurons to signal with acetylcholine provides our most compelling evidence that it is the VC neurons that inhibit egg laying."
C Banerjee et al. [4]	"We next sought to determine whether uv1 activation is sufficient to inhibit egg-laying. To address this question, we expressed channel rhodopsin (ChR2) in uv1 cells using the regulatory regions of ocr-2 as above. Light stimulation immediately following the initial egg-laying event of an active phase (see Methods) significantly delays subsequent egg-laying events, and also significantly reduces the total number of egg-laying events within an active phase (Fig. 2) (S1 Movie). For example, under control conditions a majority (~80%) of animals show a delay between the first and second egg-laying events within an active phase of < 20 s (light stimulation, -ATR) (Fig. 2B). This proportion is reduced dramatically (to around 10%) when uv1 cells are activated (light stimulation, +ATR)...Taken together, our findings provide evidence that uv1-mediated inhibition of egg-laying promotes periods of quiescence in the egg-laying program and plays a key role in setting their duration."
D Carnell et al. [15]	"The expression of gfp in the vulval muscles suggests that ser-1 may be acting in vulval muscles to mediate the stimulatory effect of 5-HT on egg laying. To test this hypothesis, we expressed the ser-1 cDNA using the muscle-specific myo-3 promoter [54] to determine whether it could rescue 5-HT-induced egg laying. Consistent with this hypothesis, we found the Pmyo-3::ser-1(+) transgene partially restored 5-HT-dependent egg laying to ser-1(ok345) animals (Fig. 2A). A wild-type ser-1 transgene with the same 3.4 kB promoter that failed to express gfp in the vulval muscles also failed to rescue the egg-laying defects of the ser-1 mutant animals (Fig. 2A). These results indicate that ser-1 expression in muscle can restore egg laying. Previous studies have indicated that 5-HT acts on vulval muscle to stimulate egg laying [14, 71, 72], Bastiani et al. 2003; [62]. Our results indicate that ser-1 mediates this response."
E Carillo et al. [16]	"NPR-1 is not expressed in BAG neurons but is expressed in a number of other sensory neurons as well as some interneurons [50]. To identify the site of action for the regulation of CO ₂ response by npr-1, we introduced the N2 allele of npr-1 into npr-1(lf) mutants in different subsets of neurons and assayed CO ₂ response. We found that expressing npr-1 in neuronal subsets that included the O ₂ -sensing URX neurons [20, 32] restored CO ₂ response (Fig. 3A). These results suggest that NPR-1 activity in URX neurons is sufficient to enable CO ₂ avoidance. However, we cannot exclude the possibility that NPR-1 function in other neurons also contributes to CO ₂ avoidance."
F Bretscher et al. [13]	"Strikingly, AFD also responded to removal of CO ₂ with a fast Ca ₂ + spike that peaked within 10 s ("CO ₂ -OFF" response...CO ₂ -evoked activity in AFD could be due to synaptic input to AFD. To test this, we imaged CO ₂ responses in unc-13 mutants, which have severe defects in synaptic release [58]. The AFD CO ₂ responses of unc-13 animals were indistinguishable from wild type (Figs. 2H and S1C). These data suggest that, as well as being a thermosensory neuron [23, 39, 53], AFD is a CO ₂ sensor with both ON and OFF responses."
G Collins et al. [25]	"To directly test how neurotransmitter signaling from the HSNs regulates egg-laying circuit activity, we used the egl-6 promoter to express Channelrhodopsin-2 in the HSNs [27], allowing us to drive neurotransmitter release specifically from the HSNs with blue light. ...We found that activation of HSNs resulted in circuit activity reminiscent of a spontaneous active state, including rhythmic Ca ₂ + activity of both VCs and vulval muscles, and egg-laying events that accompanied a subset of these Ca ₂ + transients... These results suggest that the high level of HSN activity after optogenetic activation induces strong coupling of VC and vulval muscle excitation."
H Kopchok et al. [42]	"To determine whether VC synaptic transmission regulates egg laying via HSN, we recorded HSN Ca ₂ + activity in WT and transgenic animals expressing TeTx in the VCs (Fig. 6A). During the egg-laying active state, the HSNs drive egg laying during periods of increased Ca ₂ + transient frequency in the form of burst firing (Fig. 6B), [25, 56]. We observed a significant increase in HSN Ca ₂ + transient frequency when VC synaptic transmission was blocked compared with nontransgenic control animals (Fig. 6C). WT animals spent ~11% of their time exhibiting high-frequency burst activity in the HSN neurons, whereas transgenic animals expressing TeTx in the VC neurons spent ~21% of their time exhibiting HSN burst firing activity (Fig. 6D). These results are consistent with the interpretation that VC neurotransmission is inhibitory toward the HSNs, such as proposed in previous studies [5, 74]."

Table 4 (continued)

	Authors	Author statement
J	Choi et al. [21]	"VGLUTs are members of a family of anion transporters that move diverse solutes, including inorganic phosphate, acidic sugars, negatively charged amino acids, and phosphorylated adenosine nucleotides33. As a member of the SLC17 family of transporters, VST-1 is likely an anion transporter and there are different ways an anion transporter in the synaptic vesicle membrane could limit glutamate uptake. ...we used synaptopHluorin to measure vesicular pH in wild-type and vst-1 BAG neurons. Measurements of total and surface-accessible pHluorin (Fig. 3g) allow computation of vesicular pH42...Importantly, we found that loss of VST-1 caused a measurable increase in vesicular pH (Fig. 3h), consistent with a model in which VST-1 supports anion influx into synaptic vesicles. We also measured vesicular pH in BAG neurons lacking EAT-4/VGLUT (Fig. 3h). Unlike loss of VST-1, loss of EAT-4/VGLUT did not cause a measurable change in vesicular pH. The effect of VST-1 mutation on vesicular pH provides additional evidence that VST-1 functions in the synaptic vesicle membrane. These data are also consistent with a model in which VST-1 is an anion transporter that competes with EAT-4/VGLUT for the electrochemical gradient required for glutamate uptake into synaptic vesicles. However, some SLC17 family transporters can cotransport cations, such as Na+ and H+33, and we cannot rule out the possibility that cation efflux (rather than anion influx) contributes to the effect of VST-1 on vesicular pH."
K	Choi et al. [21]	"We further tested whether the effects of vst-1 mutation on RIA activation by BAGs require GLR-1 glutamate receptors, as predicted by our model. In mutants lacking GLR-1, there was no clear effect of vst-1 mutation (Fig. 6d, e), indicating that the increased activation of RIAs observed in vst-1 mutants requires signaling through GLR-1."

cell is *part of the nervous system process* (in this case, the *negative regulation of egg deposition*) that regulates *egg-laying behavior* (Fig. 2C, Table 4C).

3.3 Statement category: inputs to neural activity and behavior

A second category of experiment provides insight into the molecular basis of behavior or neural activity induced by an environmental or internal stimulus. In this type of study, a behavior or neural activity that is typically induced by some environmental or experimental (i.e., pharmacological) condition is eliminated under the same conditions when a gene is inactivated. The gene activity is often tied to a cell via rescue of a behavioral mutant phenotype by cell-specific expression of the wild-type allele in the loss-of-function background.

In these cases, we can tie the rescue gene functions to cells (e.g., in Fig. 3A, [*G protein-coupled serotonin receptor signaling pathway* (GO: 0098664)] *occurs in* [VM (WBbt: 0006917)]), and to implied GO biological process terms via *part of* (e.g., in Fig. 3B [*intracellular receptor signalling pathway* (GO: 0030522)] *part of* [*positive regulation of negative chemotaxis* (GO: 0050924)]). In contrast to the case of cell ablation, where unknown cellular processes are disrupted, these more specific biological or cellular process terms can in turn be assigned as *part of* the *nervous system process*. Additional ontology terms and relations can be used to further specify processes or functions. For example, the Chemicals of Biological Interest ontology (ChEBI) contains neurotransmitter classes [e.g., *serotonin* (CHEBI: 28,790)], as well as environmental chemicals (e.g., *carbon dioxide* (CHEBI: 16,526) which may be linked to GO receptor activities or other GO molecular functions via *has small molecule activator* (RO: 0012001) (Fig. 3A, Table 4D, Fig. 3B, Table 4E).

In some cases, the response to a stimulus is measured in a neuron without knowledge of the receptor molecule. For instance, AFD neurons respond to removal of CO₂, but the experiment does not identify the receptor molecule [13] (Fig. 3C) (Table 4F). Because the receptor molecule is unknown, a rescue experiment cannot localise the receptor activity to a cell, meaning that the response may depend on receptor activity in another neuron. This is indicated by the absence of a relationship between the receptor activity and a neuron (similarly, a gene knock-out experiment that disrupts neural activity without cell-specific rescue would tie only the membrane depolarization GO term to the neuron). These examples also demonstrate the use of a *nervous system process* term as an intermediate between the *cellular process* terms and the *behavior* terms. For instance, in our model of the role of *npr-1* in the carbon dioxide sensing circuit, a CO₂ receptor activity is implied, but not tied to a gene or cell (Fig. 3B). However, the *nervous system process* term (*positive regulation of negative chemotaxis* (GO: 0050924) provides a natural point of integration by which the receptor activity (and by implication, the cell in which it acts) can be included as part of the same neural circuit. A representative GO–CAM model can be found here.²

3.4 Statement category: neuron-to-neuron functional connectivity

An additional type of information necessary for fully modelling neural circuits and behaviors is the functional link between neurons. We were able to model statements describing functional connectivity between neurons. For example, an optogenetic experiment in which one neuron is depolarized by a light stimulus and electrical currents

² <http://model.geneontology.org/64e7eefa00000614>

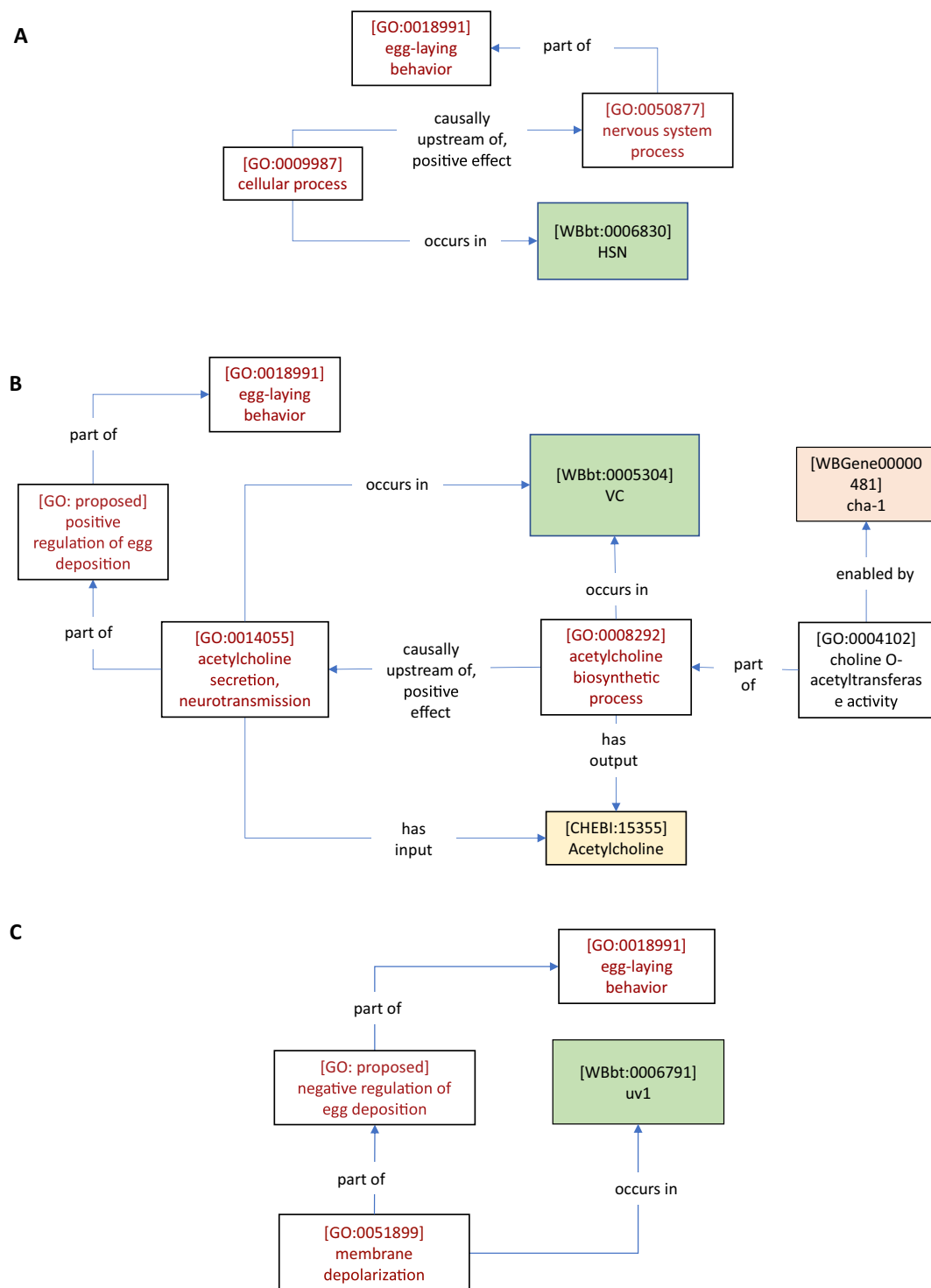


Fig. 2 CeN-CAM annotations link cells to behaviors. CeN-CAM annotations link cells to behaviors. Cells such as HSN are represented with unique identifiers in the *C. elegans* Gross Anatomy Ontology. **A** Cell ablation phenotypes can be modelled using the generic GO *cellular process* class to reflect the non-molecular nature of the experiment, and *causally upstream of* or *within* relations, allowing for the most inclusive description of the relationship between *cellular process* and *nervous system process* terms. Example drawn from Waggoner et al. [72] (Table 4A, this manuscript). **B** CeN-CAM model describing the role of the *acetylcholine biosynthetic process* in the VC neuron in the regulation of egg-laying [5] (Table 4B, this manuscript). Because the *acetylcholine biosynthetic process* can proceed independently of electrical activity, it is modeled as *causally upstream of, positive effect, acetylcholine secretion, neurotransmission*. **C** Optogenetic activation of uv1 leads to a decrease in egg-laying [4] (Table 4C, this manuscript). This *membrane depolarization* process is modelled as part of the *negative regulation of egg deposition*, a *nervous system process*

are recorded in another neuron may show how a membrane depolarization process occurring in the upstream neuron results in a subsequent membrane depolarization process in the downstream neuron. To capture this relationship, we can connect two *membrane depolarization* (GO: 0051899) processes to one another with the *causally upstream of, positive effect* relation (Fig. 4A, Table 4G).

GO also contains classes sufficient to indicate that the transmission occurs through a synapse, when this is explicitly tested by authors. For instance, Kopchok et al. [42] showed a synapse-dependent inhibitory connection between HSN and VC, using tetanus toxin to perturb synaptic transmission. This could be modelled using the GO term *chemical synaptic transmission* (GO: 0007268) or one of its children, and the *causally upstream of, negative effect* (RO: 0002305) relation to describe the inhibition (Fig. 4B, Table 4H). A similar representation would be appropriate for an experiment describing increase or loss of activity from a recorded neuron in mutants defective for synaptic transmission via mutation of *unc-13* (encodes Munc13), which is required for synaptic vesicle exocytosis [58]. In contrast, mutation of *unc-31* (encodes CAPS), which disrupts dense-core vesicle exocytosis, is required for extra-synaptic transmission [64].³GO does not have an explicit term for extra-synaptic signaling, or neuropeptide ligand activity. We include an example representation for an extra-synaptic peptidergic connection between two neurons (Additional file 1: Figure S2C), and provide a definition for the required new GO classes (Table 3). Finally, we include an example that illustrates how CeN-CAM models can represent sub-cellular phenomena involved in neuron-to-neuron functional connectivity in molecular detail (Fig. 4C) (Table 4J–K).

This model compiles findings from Choi et al. [21], who use the connection between RIA and BAG neurons to investigate mechanisms by which neurotransmitters are loaded into synaptic vesicles.

3.5 Generic data models for statement categories

In modeling author statements, we found it possible to construct models with varying levels of detail, e.g., cell types, gene products, etc. For instance, Fig. 4D represents a ‘minimal model’ of the same statement described in Fig. 3B, representing the rescue of CO₂ avoidance by expression of the *npr-1* gene in URX. We sought to provide a set of standards for the ideal model of a given category of experimental finding. In our view, a satisfying model will have a structure that corresponds to the conceptual framework of the field (here, the causal flow from inputs to circuits to behavior), and will explicitly illustrate missing knowledge. By modelling the biology that results from different categories of experimental studies, we were able to produce such generic data models for every category (Additional file 1: Figures S1, S2). In these models, the availability of GO terms and RO relations is constrained by parentage, i.e., only the generic term in the model or one of its children should be used. Importantly, the models are intended to be flexible, i.e., editable using the Noctua GO-CAM modelling software [70]. In particular, high-level *cellular process* and *nervous system process* terms can be attached to as many GO molecular functions and genes as required to represent the biology. These generic models could accommodate results from both the egg-laying and CO₂ circuits, suggesting that they may be more broadly applicable to *C. elegans* neurobiology. These models can serve as useful starting points for researchers or biocurators to generate representations

(See figure on next page.)

Fig. 3 CeN-CAM models of inputs to neurons and behavior. Cell-specific genetic rescue of a behavioral response to pharmacological treatment or environmental stimuli produces models linking genes, GO molecular functions, GO biological processes, and cells in the *C. elegans* Gross Anatomy ontology. **A** Carnell et al. [15] (Table 4D, this manuscript) found that VM-specific expression of *ser-1* could rescue serotonin-dependent egg-laying behavior, suggesting that *ser-1* is required in VM neurons to induce egg-laying in response to serotonin. The *G-protein coupled serotonin receptor activity* is part of the *positive regulation of egg deposition*, because the *part of* relation is transitive (i.e., there is no need for an additional *part of* relation connecting these nodes). **B** [16] (Table 4E, this manuscript) found that *npr-1* expression in neuronal subsets that include URX is sufficient to rescue the *behavioral response to carbon dioxide*. The activity of some CO₂ receptor is implied, leading to the addition of a placeholder term without an enabling gene, indicating an important piece of missing information. This activity can be included in the CO₂ sensing circuit by asserting that it is *part of the positive regulation of chemotaxis*, along with the *npr-1*-dependent signaling pathway. **C** AFD neuron responds to CO₂ removal [13] (Table 4F, this manuscript). Currently, there are no terms within appropriate ontologies to describe temporal features of chemical or physical inputs (e.g., ‘decreasing’). The required definitions are suggested in this paper

³ There is still debate in the literature as to how *unc-13* and *unc-31* may regulate distinct or common processes in synaptic and extra-synaptic transmission (for instance, see Sieburth et al. [64]). In addition, tetanus toxin may disrupt dense core vesicle exocytosis as well as synaptic vesicle exocytosis, as in humans [38]. Our modelling here reflects the interpretations of the authors.

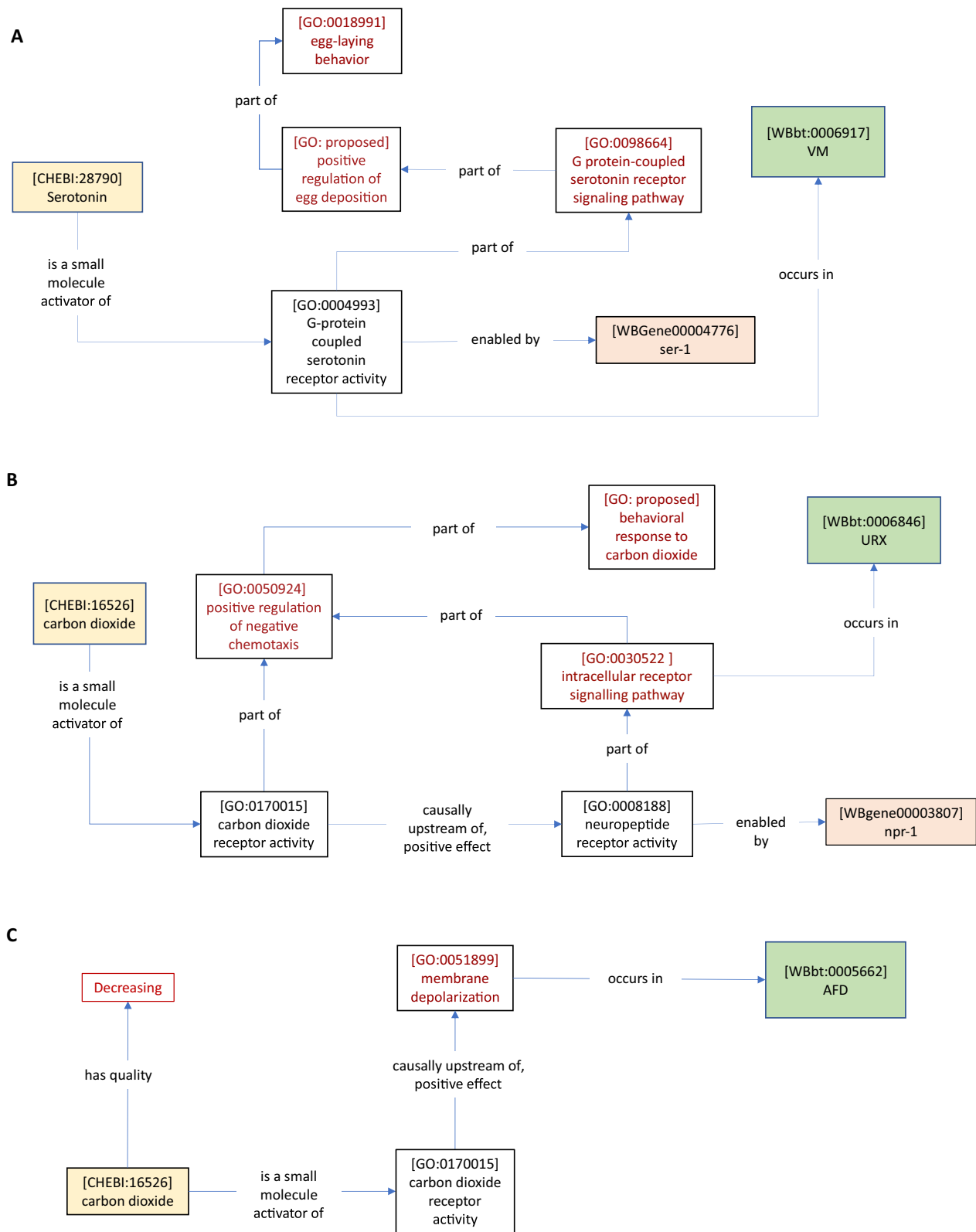


Fig. 3 (See legend on previous page.)

of the experimental results, with minimal prerequisite knowledge of the underlying data model.

3.6 GO–CAM can model neural circuits

Systems neuroscience seeks to understand the causal relationships between neural circuits, the behaviors they control, and the inputs that stimulate these circuits, in molecular detail. Having established that a wide variety of author statements describing neurobiological knowledge can be represented in semantic triples, and describing the required GO classes, we generated a model that captures some of the causal relationships within a single circuit. This graph represents interactions between four of the cells that influence egg-laying behavior, from a limited subset of statements in our collection (Fig. 5).

Though this diagram does not contain all cells, or all known connections that contribute to egg-laying, it illustrates several useful features of using the GO–CAM framework to model this biology. For instance, the influence of AWC in the circuit is connected to the rescue of HSN inhibition through AWC-specific expression of *tax-4* [28]. This presumably involves chemical output from AWC that depends on its electrical activity; however, the author statement does not assert this specifically. Similarly, the serotonin synthesized in HSN is likely to be causally involved in the activation of VC, via activity-dependent release into the synapse connecting these two neurons, but this has not been demonstrated directly—only that exogenous serotonin can substitute for the absence of HSN, where there is evidence for *tph-1*-dependent serotonin biosynthesis [74]. Finally, we used two nodes to represent serotonin, because it allows the possibility that the HSN–VC serotonergic connection may be synaptic, while the HSN–VM connection is extra-synaptic. Thus, CeN–CAM models can represent causal flow within anatomical networks in molecular detail, at the level of what is known, supported by statements in the published literature, and as a result, also indicate what knowledge is missing.

In addition, we show that it is possible to use more informative relations in the context of a model that integrates various findings from the egg-laying literature, compared to those used to model individual author statements. In the case of representing author statements,

our models were restricted to the use of information contained in those statements. Here, in the larger CeN–CAM model, we are able to use relations that reflect an overall interpretation of the biology, such as *positively regulates* (RO: 0002213) (a child of *causally upstream of, positive effect*) to describe interactions between processes in different neurons.

3.7 GO–CAM can model simple circuit phenomena

Many studies of neural circuits investigate the mechanistic basis for information processing capabilities in the brain, such as the integration of inputs from multiple sensory modalities, and changes in behavior that depend on memory of past experience. We extended our modelling efforts to represent some of these findings, primarily from our CO₂ avoidance behavior data set.

3.7.1 Context-dependence and multisensory integration

An important function of nervous systems in any organism is the ability to execute behavioral responses in a context-dependent manner. This requires integrating multiple kinds of environmental information, ‘computing’ on that information and eliciting an appropriate response. This integration may commonly be performed either by individual neurons responsive to multiple inputs, or by small circuits of three or more neurons, e.g., single interneurons that integrate input from multiple sensory neurons [29]. Capturing this type of integration requires relations that imply the necessity of multiple conditions toward a single response, sometimes referred to as AND logic.

We found a relevant example in our CO₂ avoidance data set. In one study, *tax-2*-dependent rescue of CO₂ avoidance was found to depend on the presence of food [13] (Table 5A). We considered whether any of the GO–CAM relations can be interpreted as conveying necessity, in particular the relation *part of*. When considering processes, such as those represented in a model, if one process is part of another process, then the latter process necessarily has the former process as a part (or subprocess), meaning that in these contexts *part of* and *has part* (BFO: 0000051) are inverse relations [63]. Figures 6A–C shows how the necessity for AND logic might

(See figure on next page.)

Fig. 4 CeN–CAM models of neuron-to-neuron functional connectivity. **A** Optogenetic activation of HSN neuron causes membrane depolarization in HSN [25] (Table 4G, this manuscript). **B** Inhibiting neuron–neuron synaptic transmission in VC causes increased activity (membrane depolarization) in HSN, suggesting inhibition of HSN dependent on synaptic transmission from VC [42] (Table 4H, this manuscript). **C** Model of the mechanisms involved in RIA activation by BAG, based on data from Choi et al. [21] (Table 4J–K). Blue boxes represent a GO cellular component term. **D** Alternative, more basic model of the same statement modelled in Fig. 3C (Table 4F). Figure 3C represents the preferable method

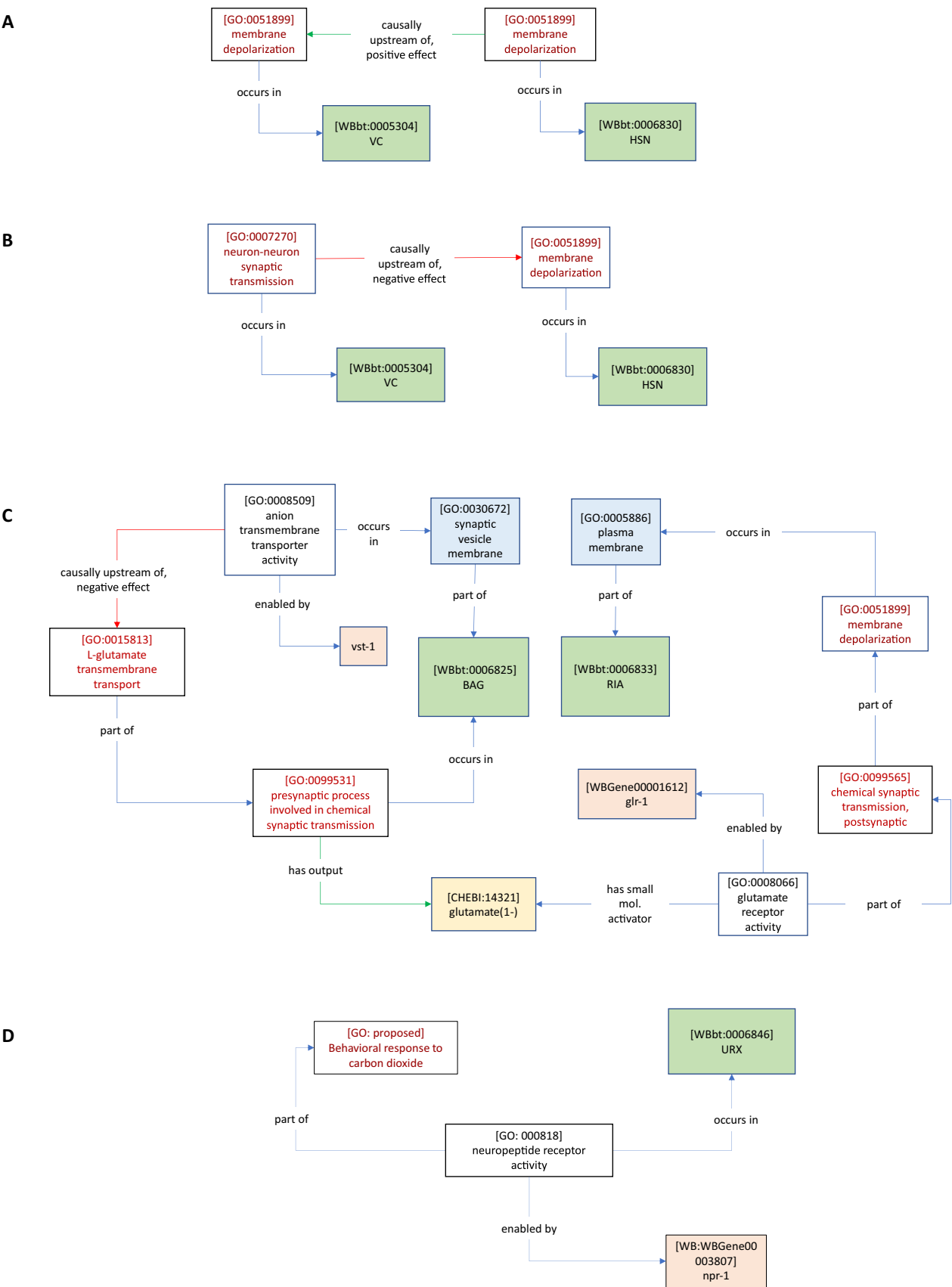


Fig. 4 (See legend on previous page.)

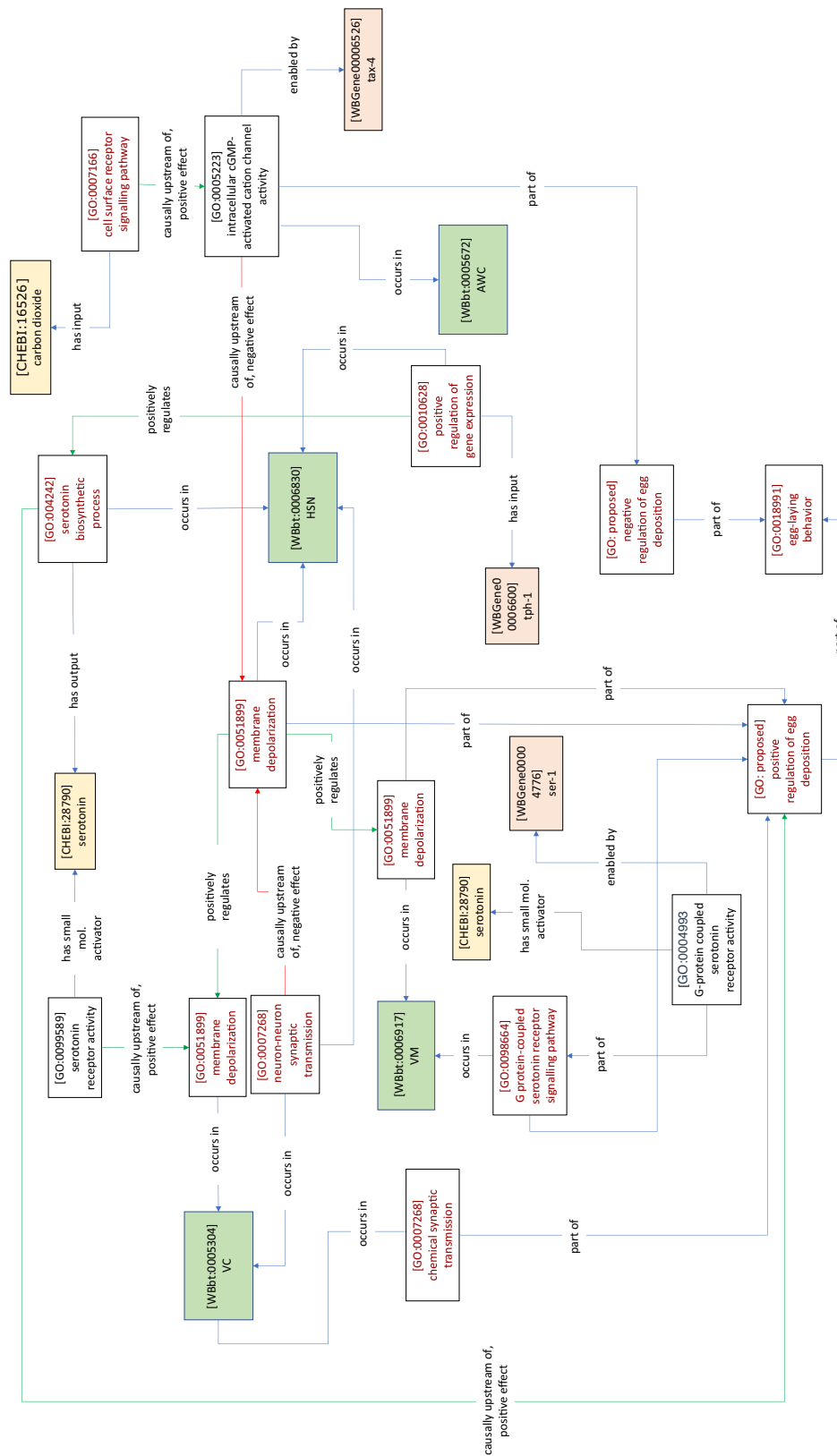


Fig. 5 CeN-CAM representation of several cells in the egg-laying circuit and their interactions. Drawn from several statements in Additional file 2: Table S1 [1, 15, 25, 28, 42]. Compared with models of individual author statements, more specific relations can be used here, given the biological context (for instance *positively regulates*, rather than *causally upstream of*, *positive effect*)

Table 5 Author statements collection B

Author	Author statement
A Bretscher et al. [13]	"When placed in a 0–5% CO ₂ gradient, <i>C. elegans</i> migrate away from high CO ₂ (Fig. 1A, B) [12]. We used this assay to identify potential CO ₂ -sensing neurons. We next attempted to rescue the tax-2(p694) defect by expressing tax-2 cDNA from neuron-specific promoters, confirming appropriate expression by polycistronic constructs that coexpress tax-2 and gfp [24]. Expressing tax-2 cDNA in the AFD thermosensory neurons strongly rescued CO ₂ avoidance, both on and off food (Fig. 1D). In contrast, restoring tax-2 to the BAG O ₂ -sensing neurons rescued CO ₂ avoidance on food, as shown previously [35], but not off food. Expressing tax-2 cDNA in the ASE taste neurons or in the AQR, PQR, and URX O ₂ -sensing neurons also partially rescued CO ₂ avoidance, both on food and off food (Fig. 1D). These data implicate functionally diverse sensory neurons in CO ₂ avoidance."
B Kopchok et al. [42]	"Optogenetic stimulation of the vulval muscles triggered an immediate rise in vulval muscle cytosolic Ca ²⁺ , tonic contraction of the vulval muscles, vulval opening, and egg release (Fig. 7B, C). Although optogenetic stimulation resulted in sustained vulval muscle Ca ²⁺ activity and contraction, vulval opening and egg release remained rhythmic and phased with locomotion, as previously observed in WT animals [3, 25]. Simultaneous brightfield recordings showed the vulva only opened for egg release when the adjacent ventral body wall muscles were in a relaxed phase (Movie 5). We have previously shown that eggs are preferentially released when the vulva is at a particular phase of the body bend, typically as the ventral body wall muscles anterior to the vulva go into a more relaxed state (Collins and Koelle, 2013; [25]. We now interpret this phasing of egg release with locomotion as evidence that vulval muscle Ca ²⁺ activity drives contraction, but the vulva only opens for successful egg release when contraction is initiated during relaxation of the adjacent body wall muscles. Together, these results show that optogenetic stimulation of the vulval muscles is sufficient to induce vulval muscle Ca ²⁺ activity for egg release in a locomotion phase-dependent manner."
C Branicky et al. [11]	"Because clh-3 encodes chloride channels, we reasoned that it might affect HSN activity by affecting HSN excitability. To test this, we crossed the clh-3 mutants with an integrated transgenic line that expresses Channelrhodopsin-2 (ChR2), the blue-light-activated cation channel, in the HSNs (wzls6 [p _{egl-6} :ChR2]; [27, 46]. In wild-type worms, egg laying is robustly stimulated by ChR2 activation [46], Fig. 7). The magnitude of the response, as indicated by both the percentage of stimulations resulting in egg-laying events and the number of eggs laid per stimulation, is dependent on both the strength and duration of the light stimulus (Fig. 7A). The response is also completely dependent on the addition of all-trans retinal, the cofactor for ChR2, to the plates (Fig. 7B), as well as the presence of the HSNs (Fig. 7D). We observed that the clh-3(n995gf) mutant laid significantly fewer eggs per stimulation than the wild type and blue light stimulation elicited an egg-laying event significantly less frequently in mutant animals than in wild type. Conversely, the clh-3(ok768 and ok763) mutants laid significantly more eggs than the wild-type and blue light stimulation elicited egg-laying events, including the laying of multiple eggs, more frequently than for the wild type (Fig. 7C, D). Together, these data support a role for the clh-3-encoded channels in inhibiting HSN excitability: increased channel activity inhibits HSN excitability, whereas loss of the channel promotes HSN excitability."
D Emtage et al. [27]	"Having established a method for exciting the HSN neurons in freely behaving animals, we next tested whether Go signaling controls the sensitivity of the HSNs to ChR2-mediated stimulation. egl-10 encodes an RGS family GTPase-activating protein (GAP) that accelerates hydrolysis of GTP by Goa and thereby antagonizes Go signaling [40]. egl-10 mutants carrying a Promegl-6::ChR2 transgene did not lay eggs in response to a photostimulus that reliably evoked egg-laying behavior when applied to wild-type transgenic animals (Fig. 6E), indicating that globally increasing Go signaling reduced the excitability of the HSN neurons. We next measured the effect of activating Go signaling downstream of the EGL-6 GPCR by testing the behavioral responses of transgenic egl-6(gf) mutants to photostimulation. Like egl-10 mutants, transgenic egl-6(gf) mutants had reduced behavioral responses to photostimulation of HSN neurons (Fig. 6F). Deletion of irk-1 significantly restored the response of egl-6(gf) mutants to excitatory input (Fig. 6F)"
E Collins et al. [25]	"We have previously shown that two Cl ⁻ -extruding transporters, KCC-2 and ABTS-1, are expressed in the HSNs, where they promote the development of inhibitory ligand-gated Cl ⁻ -channel signaling [10, 68]. These data suggest that tyramine signaling through LGC-55 would hyperpolarize the HSN and inhibit activity. To test this directly, we compared HSN activity in wild-type and lgc-55 mutant animals. We observed a significant increase in the frequency of Ca ²⁺ transients in HSNs of lgc-55 mutant animals (Fig. 6E, F) in both the inactive and active states of egg-laying behavior. Mean HSN inter-transient intervals in wild-type animals were 41 ± 5 s in the inactive state and 17 ± 2 s during the active state, while intervals in lgc-55 mutants were reduced to 22 ± 2 s in the inactive state and 13 ± 1 s during the active state. Thus, the absence of inhibitory feedback by tyramine signaling onto the HSNs leads to increased activity in both the active and inactive egg-laying behavior states."
F Bretscher et al. [13]	"The timing of CO ₂ -evoked Ca ²⁺ responses in both AFD and BAG correlated with peaks in locomotory activity (Fig. 6A). We investigated these correlations directly by ablating AFD and/or BAG and examining behavioral responses (Fig. 6B). For statistical comparison, we chose time intervals before and after gas switches according to the occurrence of peaks in wild-type behavioral rates. In the absence of food, neither AFD nor BAG ablation abolished modulation of speed across shifts in CO ₂ (Fig. 6B and Additional file 1: Fig. S4). Stronger phenotypes were observed for reversal and omega rates (Fig. 6B). Unexpectedly, ablation of AFD increased reversal and omega rates following a sharp CO ₂ rise (ttx-1, Fig. 6B, 7B, C, H, and I) and reduced suppression of omega turns following a CO ₂ fall (ttx-1, Figs. 6B, 7 K, 7 K, and L), suggesting that AFD acts to suppress reversals and omega turns at these two timepoints. Ablation of BAG abolished reversal and omega responses to a rise in CO ₂ (pBAG::egl-1, Figs. 6B, 7B, C, H, I) and reduced the suppression of omega turns following a CO ₂ fall (pBAG::egl-1, Figs. 6B, 7 K, K, and L), consistent with BAG excitation promoting reversals and omega turns. Coablation of AFD and BAG abolished the suppression of reversals and omega turns following a fall in CO ₂ (ttx-1; pBAG::egl-1, Fig. 7F, L). This effect was due to reduced reversal and omega rates under prolonged high CO ₂ (ttx-1; pBAG::egl-1, red bars, Fig. 7E, K). These data suggest that together BAG and AFD act to suppress reversals and omega turns when CO ₂ decreases."

Table 5 (continued)

Author	Author statement
G Shyn et al. [62]	"Behavioral data implicated serotonin, a neuromodulator released from the HSN egg-laying motoneurons, in the control of egg-laying behavior 2, 3, 4. When we treated animals with exogenous 5HT, we observed a significant increase in the frequency of Ca2+ events from a baseline of 5.63 min ⁻¹ to a rate of 35.01 min ⁻¹ (p < 0.001, Kolmogorov–Smirnov test). Thus, exogenous serotonin appeared to modulate the functional state of the vulval muscles, switching them from a pattern of sporadic Ca2+ activity to a pattern of continual Ca2+ activity. In principle, serotonin could exert its effects directly on the vulval muscles, or it could act indirectly by altering the activity of the egg-laying motoneurons. To resolve this issue, we ablated the egg-laying motoneurons and assayed the effect of serotonin on vulval muscle Ca2+ transients. We found that ablated animals exhibited a continuous train of Ca2+ transients on serotonin essentially identical to that exhibited by unablated wild-type animals (Fig. 2, Table 1). Thus, the ability of serotonin to increase the frequency of Ca2+ events was not markedly affected by the absence of the egg-laying motoneurons, indicating that serotonin directly stimulates the activity of the vulval muscles."

be modelled. The cell-specific rescue of CO₂ avoidance via *tax-2* expression in BAG neurons, along with the inferred CO₂ receptor activity, constitutes one ‘branch’ of the model. A second ‘branch’ represents the involvement of food, via an inferred *signal transduction* (GO: 000716) process. These two branches converge on a proposed GO term *signal integration process* via *part of* relations, capturing their joint necessity. We chose to include a new GO biological process for their integration (rather than having them converge on positive regulation of CO₂ avoidance) to represent that the mechanism enabling the AND logic should be asserted. This representation leaves open many possible biological models for the mechanism by which the asserted integration might occur (for example, one in which food and CO₂ are sensed by distinct sensory neurons, and integrated in a third interneuron) while capturing AND logic.

3.7.2 Co-ordination of neural activity and physical features of behavior

Our egg-laying data set contains statements describing a mechanical feature of egg-laying regulation, namely, neural activity in the vulval muscles is co-coordinated with the phase of body bending during locomotion [42] (Table 5B). We suggest that *part of* and a new GO Biological Process class *behavior co-ordination process* could be used to model this (Fig. 6D). This representation captures the author’s interpretation that neural activity in VM drives oviposition conditional on features of locomotory behavior.

3.7.3 Neuromodulation

An important goal of neural modeling is to capture neuromodulatory effects, which may be defined as changes in neuronal excitability or dynamics, due to changes in internal state or external context [6]. We found a small number of entries in our egg-laying data set that described changes in membrane excitability (e.g., Table 5C, D). We chose to model these with the GO term *regulation of resting membrane potential* (GO: 0060075), with the view that changing the ability of

the cell to maintain its resting potential is the primary mechanism for regulating neuronal excitability. However, it may be more appropriate to use a parent GO class that can model changes in excitability, rather than implying any mechanism. For instance, one might imagine induced changes in receptor expression that could alter excitability or responsiveness, without changing the resting membrane potential [61]. The term *regulation of membrane depolarization* (GO: 0003245) and its children may be more appropriate when the mechanism is not known.

3.8 Extending existing ontology classes for modelling neurobiology

We found that the use of existing ontologies provided the correct classes for building our models of neural circuitry. However, in some cases we found that additional classes would be useful for a complete and accurate description of the type of biology we are modeling. These proposed additional classes would be added to GO, the Evidence and Conclusion Ontology (ECO) and the Environmental Conditions, Treatments and Exposures Ontology (ECTO) and are listed in Table 3. Evidence supported by four types of experiments, chemical inhibition of neurons via histamine chloride [55], inhibition of synaptic transmission [67], mechanical perturbation, and long-term exposure experiments require additional classes in ECO. The categories below describe the biological phenomena that require new GO Biological Process terms, GO Molecular Function terms and ECTO terms to model. Inclusion of these new classes would enrich the kinds of queries that could be supported by C_eN-CAM (for instance, we may want a list of all interneurons whose activity is known to be modulated by peptidergic output from ASI neuron). Particularly useful would be the addition of the previously mentioned requirement for GO terms describing extra-synaptic neuropeptide signaling and neuropeptide activity. OBO ontologies are carefully managed, and ontology developers provide processes for the addition of new classes. For instance, we were able to add a GO term for *carbon dioxide receptor*

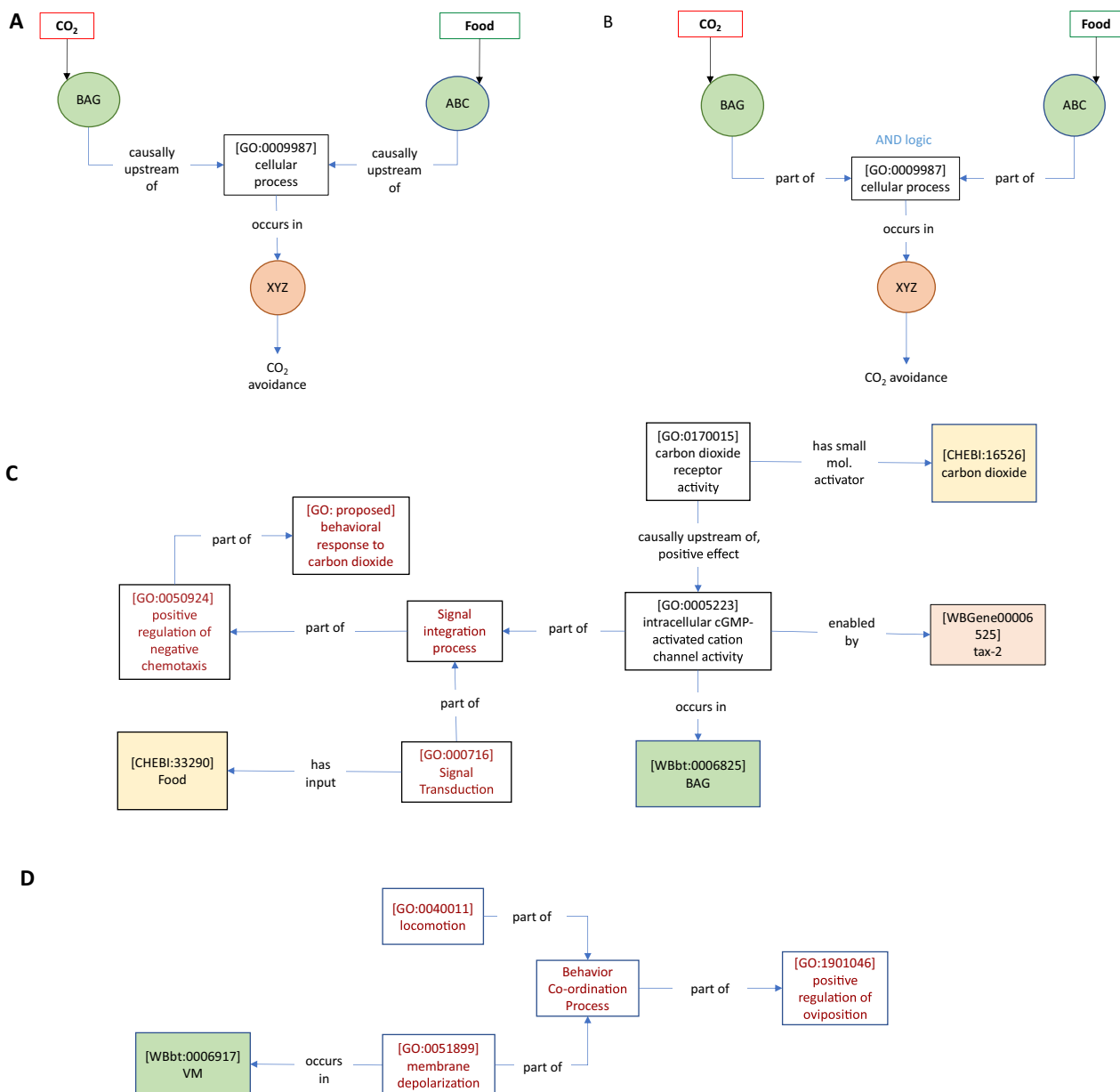


Fig. 6 Modeling signal integration with the *part of* relation. Bretscher et al. [13] (Table 5A, this manuscript) found that restoring *tax-2* expression to BAG neurons rescued CO_2 avoidance on food, but not off food, suggesting that *tax-2*-dependent avoidance behavior requires food input. This implies an AND-gated interaction to integrate food and CO_2 signals. **A** One of the relations in GO-CAM, *causally upstream of* does not capture the necessity of each input, whereas **B** *part of* does imply necessity, as required to capture the AND logic involved in sensory integration. **C** GO-CAM representation of the author statement listed in Table 2A (this manuscript). **D** This relation may also be useful for modelling co-ordination of behaviors. Kopchock et al. [42] (Table 5B, this manuscript) found that optogenetic activation of the vulval muscles was insufficient to induce an egg-laying event; instead co-ordination of VM activation with a particular phase in the body bend during locomotion was required

activity (GO: 0170015) via the GO GitHub repository by providing the necessary information for its incorporation into the ontology (see <https://github.com/geneontology/go-ontology/issues/24994>). We discuss other proposed classes below.

3.8.1 Fine temporal dynamics of neural activity and behavior

Many statements described neural activity in fine temporal detail. Experimental treatments are sometimes reported to result in changes to either magnitude, duration and/or frequency of membrane depolarization or hyperpolarization (e.g., Table 5E). In some cases, these

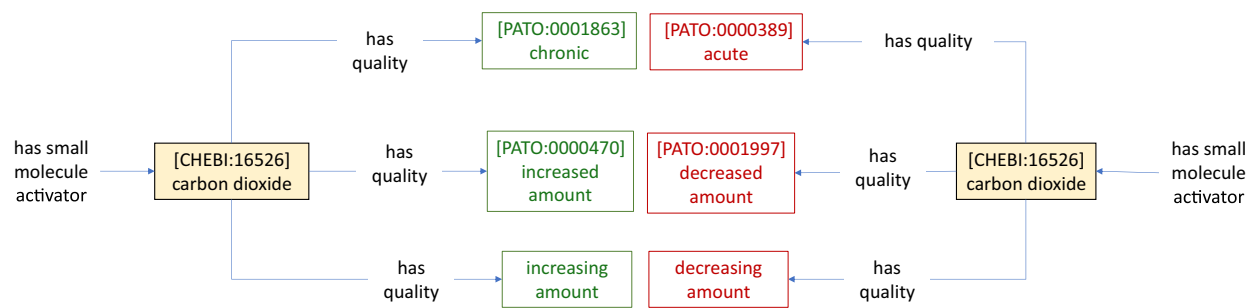


Fig. 7 Proposed classes for addition to the environmental conditions, treatments and exposures ontology (ECTO) to represent temporal features of environmental inputs. The new classes *increasing amount* and *decreasing amount* can be used in combination with the relation *has quality* (RO: 0000086)

phenotypes lead authors to the interpretation that these parameters of a neuron's behavior are under selection in wild-type organisms, and required to perform the given behavioral task (for instance, changes in the frequency of calcium transients in neurons of the egg-laying circuit are thought to reflect shifts from 'active' to 'inactive' states of the circuit, reflecting phases of the behavior [25]). However, the GO class for *membrane depolarization* (GO: 0051899) does not distinguish these variations, and related terms such as *positive regulation of membrane depolarization* (GO: 1904181) explicitly groups these phenomena together under one term. In the future, it may be useful to have these classes separated into explicit categories for a more comprehensive and informative view of how neural activity is regulated.

Likewise, many assays of egg-laying behavior document its temporal features, dividing it into active and inactive phases, and measuring the effect of various perturbations on their duration and frequency (e.g., Table 4D). In the CO₂ avoidance literature, a small number of entries described fine details in motor output as a result of neuronal perturbations, such as changes in rates of reversal or frequency of omega turns [13] (Table 5F). We were unable to model these features due to a lack of sufficiently fine-grained GO terms in the Biological Process ontology. However, we note that WormBase has a phenotype ontology to describe behavior in many of the appropriate ways (for example *turning frequency increased* [WBPhenotype: 0002313]) (Schindelman et al. 2011). Since these are mutant phenotypes and not Biological Processes, these ontology classes are a poor fit for CeN-CAM. Conversion of these phenotype classes into meaningful GO Biological Processes would be helpful to create more fine-grained models of behavior.

3.8.2 Temporal features of environmental input

In modelling environmental inputs, we found it necessary to model several temporal features. For instance, PATO

lacked terms required to model changes in input concentration or intensity over time, as required to model the OFF response to CO₂ in ADF neurons (Fig. 5B). We found that terms in the Environmental Conditions, Treatments and Exposures Ontology (ECTO) came closer to these requirements [e.g., *exposure to decreased methane* (ECTO: 4000005)], but a specific exposure term for many chemicals, such as carbon dioxide, does not exist. We propose and define new classes specifying temporal properties that could be hosted in ECTO (Fig. 7) (Table 3).

4 Discussion

Given the size, scope and rapid growth of the biological literature, new methods are required to integrate, represent and interpret accumulating knowledge at varying levels of detail. One method for achieving this is to integrate objects from relevant ontologies in semantic graphs [38, 70]. In this work, we demonstrate the applicability of a gene ontology-based semantic modelling framework, GO-CAM, for representing knowledge of neural circuits in *C. elegans*. By capturing author statements in select papers, we were able to construct simple semantic statements and then link those statements together to begin building causal models of two *C. elegans* behaviors, egg-laying and carbon dioxide avoidance. We found that the existing Relations Ontology (RO) relations used in GO-CAMs are adequate, but new classes are required in several ontologies, including the Gene Ontology (GO), the Evidence and Conclusions Ontology (ECO) and the Experimental Conditions, Treatments and Exposures Ontology (ECTO) to fully represent the statements in our collection.

In general, the GO contains a rich vocabulary for neurobiology, in part due to projects, such as SynGO [41], which expanded GO's representation of synaptic function, and deposited corresponding annotations in the GO repository as GO-CAM models. In addition, the

Reactome knowledgebase contains pathways for synaptic transmission, and these have been converted to GO-CAMs [31]. To complement the synaptic transmission part of the ontology, new terms will be required to describe features of extra-synaptic (i.e., peptidergic) connectivity. We also anticipate a more widespread need to model temporal details of sensory neuron input, since chemotactic behaviors typically involve sensing of spatial gradients, experienced by sensory neurons as change over time, resulting in movement toward or away from the odour source. For instance, the sensory neuron AWA adapts to a given concentration of diacetyl, requiring increasing concentration for continued depolarization and associated positive chemotaxis [43]. Adding these temporal details to the inputs of individual neurons would allow for more expressive representations. In addition, many of the GO Biological Process terms that we propose as additions to the Gene Ontology are the result of describing the processes at the level of an organism or cell and are not derived from attempts to annotate gene function. Such temporal details are often derived from phenotypic measurements resulting from non-genetic perturbation (e.g., cell ablation, pharmacological inputs, in anticipation of the involvement of gene activities in the programmed regulation of these processes. In practice, new GO BP terms based on these observations will likely need genetic evidence before they can be included in the GO; however, we include them here as suggestions, which may guide future proposals as the need arises.

In addition, the models presented here go beyond the minimal requirements for the conversion of author statements into semantic triple format. According to our criteria, a satisfying model should reflect the conceptual framework of the field (in this case, representing causal flow from inputs through circuits to behavior). In this way, the models indicate which knowledge is missing. For instance, Fig. 3B depicts the role of *npr-1* in the URX neuron in carbon dioxide avoidance behavior. By including a *nervous system process* term indicating the involvement of neural circuit, it is possible to indicate that a carbon dioxide receptor, whose encoding gene and cellular site of action require identification, are part of the circuit. The data modelling work presented here also provided us with an empirical basis for creating generic models or templates for each of the statement categories described above (Additional file 1: Figs. S1, S2). In constructing these generic models, we followed structures that reflected the relevant conceptual framework into which particular classes of experimental results should fit. For instance, the full description of a peptidergic connection between neurons should involve the relevant ligand(s), receptor(s), ion channel(s) and encoding genes (Additional file 1: Fig. S2C). Including the

overarching biological process term *neuron-to-neuron signaling by neuropeptide* allows a database to be indexed for these types of connections. In this way, scientists and biocurators can collaborate to generate models with a common understanding of their proper criteria.

We also tried to capture simple ‘computations’ important for nervous system function, and arrived at some modelling principles that are noteworthy. First, when representing the AND logic involved in multisensory integration, it is important to use relations that convey necessity, and have separate causal flows that converge on a single biological process. We note that the proposed GO Biological Process terms (*signal integration process* and *behavior coordination process*) describe an information processing event that could in theory be carried out via any molecular mechanism that satisfies the task. Representing similar kinds of neurobiological knowledge in the GO may require further understanding of the types of molecular mechanisms that typically underlie this type of nervous system process [29].

In this study, we focused on modelling interactions within neural circuits, and their relationship to broad features of behavior, rather than the detailed mechanics of motor programs that they control. In principle, it is possible to link neural activities to the mechanical outputs of neural activity, where both are considered *part of* the organismal behavior under study. In the case of egg-laying, this motor output is simple, involving only the contraction of the vulval muscles. However, CO₂ avoidance involves a complex series of locomotory processes, each of which is regulated by specific patterns of neural activity (for example, see [13]. As discussed above, inference of new biological process terms by conversion of the appropriate terms from the *C. elegans* Phenotype Ontology will allow modelling of these features of behavior. These motor outputs could then be modelled as *part of* the organismal behavior *carbon dioxide avoidance behavior* (i.e., they are the targets of the *regulation of chemotaxis* term in the models diagrammed here).

One limitation not previously discussed is that GO-CAM currently has no way of incorporating negative data. In some cases, this prevented documentation of important discoveries from our literature search. For instance, [62] found that in the absence of VC neurons and HSN neurons, spontaneous Ca²⁺ transients continued in the vulval muscles, suggesting that these neurons are not necessary for VM activity (Table 5G). These are arguably important omissions from these knowledge graphs.

With these adjustments, this work demonstrates the possibility of creating a machine-readable knowledge base for neurobiology that can return information based on queries. An important part of this resource will be to

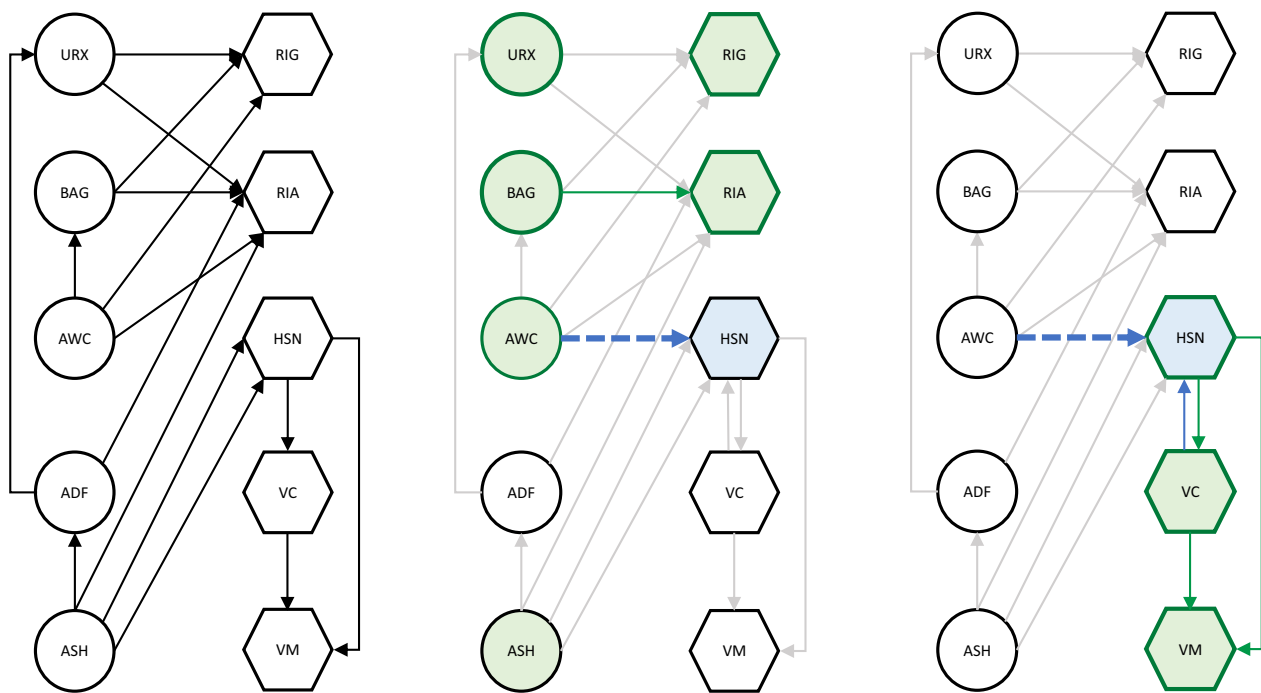


Fig. 8 Functional annotation of the *C. elegans* connectome allows visualization of causal relationships within and among neural circuits. Black or grey arrows indicate synaptic connections from electron microscopy of serial sections. Coloured solid arrows indicate activating (green) or inhibiting (blue) synaptic connections. Coloured dotted arrows indicate activating or inhibiting indirect or extra-synaptic connections. Bold outlines on neurons indicate the sign of the neuron on the specified behavior. Fill colour on neurons indicates the effect of the specified input on neural activity. **A** Synaptic connectivity for subset of neurons involved in both CO₂ avoidance behavior and egg-laying behavior. **B** Neurons activated or inhibited by CO₂ are indicated by fill color, neurons contributing to CO₂ avoidance behavior indicated by outline color. **C** Neurons activated or inhibited by serotonin are indicated by fill color, neurons contributing to egg-laying behavior indicated by outline color

generate a representation of the *C. elegans* brain that is computable, since the current anatomy ontology does not contain synaptic or gap junction connections between neurons [45]. Incorporating connectome data that contains the appropriate neuron to neuron relations and property chain algebra [i.e., (Neuron A synapses to Neuron B) and (Neuron B synapses to Neuron C) implies that (Neuron A connects with Neuron C)] will allow queries that include or depend on synaptic connectivity information.

The application and widespread use of this technology depends on the amount of information incorporated into the knowledgebase, much of which at this point is directly dependent on manual input by curators. Given our definition of an author statement as a passage of text following a stereotyped form (hypothesis, observation, interpretation), it is possible to envision how author statements could be identified automatically. We envision a scenario in which machine intelligence could be applied to identify not only author statements, but identify the category of experiment they describe, and the GO terms that correspond to words within them. Using the generic data models described here as templates could help to

ensure that machine-generated models are constrained by a desirable structure. With these capabilities, a large volume of the *C. elegans* neural circuit literature could potentially be converted into CeN-CAM models computationally. The author statements that we collected as part of this work will serve as training data to pursue this type of approach.

It is also important for biologists to have usable and intuitive ways of interacting with and analysing synthesized knowledge. One way to achieve this is by representing compiled neurobiological data in an anatomical context. For instance, the Virtual Fly Brain project has used an ontology-based approach to integrate connectivity and single-cell gene expression data, which can be visualised in a three-dimensional visualization of the brain, using a semantic integration framework [26, 52]. This allows users to run queries to explore gene expression and phenotype data in an anatomic context. We are exploring the possibility of functionally annotating the *C. elegans* connectome in molecular detail using CeN-CAM (Fig. 8). The relevant data are the same as those captured by the statement categories for which we have generated

templates, namely, causal relationships between inputs to neurons, neurons to behavior, and causal connection between neurons. In addition to populating template data models, the GO terms in the relevant author statements could be used to populate a dataframe of the kind used by visualization software, such as Cytoscape [59] (Additional file 1: Figure S3), ideally in an automated manner. This visualization could serve as an intuitive entry point for exploring neural circuit function on a connectome scale, where evidence behind individual elements of the graph could be accessed by linking to the corresponding CeN–CAM models. An anatomical visualization that includes functional and connectivity data would allow predictions to be made about functional relationships between different circuits. For instance, CO₂ has been shown to inhibit egg-laying [28] in an AWC-dependent manner. Representing neurons that respond to CO₂ along with neurons that control egg-laying in a connectome context (Fig. 8) suggests that ASH is a CO₂ responsive neuron synaptically linked to HSN. Indeed, ASH was later shown to inhibit both egg-laying and HSN activity [73]. Functional connectome annotation would also enable various kinds of system-wide analysis of the *C. elegans* brain—a research avenue that has so far been pursued in the absence of functional information [1, 37, 57]. We also envision the ability to make useful predictions using the underlying semantic models. For instance, the graphs may include causal links between molecular functions and behaviors that result from synthesis of disparate literature, leading to new predictions about how genetic or pharmacological perturbations may affect behavior. Thus, the work described here provides semantically and biologically rigorous foundations for an integrated systems neuroscience resource combining knowledge representation, connectome annotation and associated computational analyses of *C. elegans* nervous system function.

Abbreviations

GO	Gene Ontology
GOC	Gene Ontology Consortium
GO–CAM	Gene Ontology–Causal Activity modeling
CeN–CAM	<i>Caenorhabditis elegans</i> Neural–Circuit Causal Activity Modeling
ChEBI	Chemicals of Biological Interest Ontology
RO	Relations Ontology
ECO	Evidence and Conclusions Ontology
BFO	Basic Formal Ontology
PATO	Phenotype and Trait Ontology
ECTO	Environmental Conditions, Treatments and Exposure ontology

Supplementary Information

The online version contains supplementary material available at <https://doi.org/10.1186/s40708-023-00208-5>.

Additional file 1: Figure S1. Curation templates for experimental results linking neurons to behavior. Each GO term and each relation represents the most generic (highest level) term that is suitable for the model.

Authors can populate a model with either these relations, or any of its child terms. High level GO biological process terms can also be expanded to include an arbitrary number of constituent GO molecular functions or GO biological processes. The following labels describe the causal flow described by each model, and the corresponding type of experiment. **A** Neuron to Behavior (ablation) **B** Neuron to Behavior (activation/inhibition). **C** Input to Neuron to Behavior (rescue). **Figure S2.** Curation templates for experimental results inputs describing functional connections between neurons, whether **A** mechanism agnostic (neuron to neuron), **B** via synapses, or **C** extra-synaptic neuropeptide signalling. Terms without IDs are novel terms. **Figure S3.** Cytoscape rendering of the same neural circuit as in Fig. 8 (this manuscript). Filled cells are responsive to CO₂ (green cells are activated, blue cells are inhibited). Outlined cells are involved in egg-laying (green outlined cells promote, and blue outlined cells inhibit egg-laying, respectively).

Additional file 2: Table S1. Conversion of author statements to semantic triple format, with statements drawn from the literature on egg-laying behavior. Columns labelled Process # contain nodes representing either GO Biological Processes or GO Molecular Functions. Terms without IDs are novel terms.

Additional file 3: Table S2. Conversion of author statements to semantic triple format, with statements drawn from the literature on carbon dioxide avoidance behaviour.

Acknowledgements

We thank all members of the Sternberg lab at Caltech for their feedback during the course of the project. We also thank Raymond Lee (WormBase) and members of the Gene Ontology Consortium, as well as Susan Bello (Mouse Genome Informatics) and members of the Unified Phenotype Ontology working group for helpful discussions.

Author contributions

PWS and SJP conceived and designed the study, SJP, KVA and DPH conducted the study. SJP, KVA, DPH and PWS wrote and revised the manuscript. SJP prepared all the figures. All authors approved the manuscript.

Funding

KVA and DPH are funded by the National Human Genome Research Institute (U24HG012212). SJP and PWS are funded by NIH U24HG010859-03S2.

Availability of data and materials

All data generated or analysed during this study are included in this published article (and its Additional file information files).

Declarations

Competing interests

The authors declare that they have no competing interests.

Author details

¹Division of Biology and Biological Engineering, California Institute of Technology, Pasadena, CA 91125, USA. ²The Jackson Laboratory, Bar Harbor, ME 04609, USA.

Received: 20 April 2023 Accepted: 22 September 2023

Published online: 10 November 2023

References

- Alon U (2007) Network motifs: Theory and experimental approaches. *Nat Rev Genet* 8:450–461. <https://doi.org/10.1038/nrg2102>
- Apfeld J, Kenyon C (1998) Cell nonautonomy of *C. elegans* daf-2 function in the regulation of diapause and life span. *Cell* 95:199–210. [https://doi.org/10.1016/S0092-8674\(00\)81751-1](https://doi.org/10.1016/S0092-8674(00)81751-1)
- Ashburner M, Ball CA, Blake JA et al (2000) Gene Ontology: tool for the unification of biology. *Nat Genet* 25:25–29. <https://doi.org/10.1038/75556>

4. Banerjee N, Bhattacharya R, Gorczyca M et al (2017) Local neuropeptide signaling modulates serotonergic transmission to shape the temporal organization of *C. elegans* egg-laying behavior. *PLoS Genet* 13:e1006697. <https://doi.org/10.1371/journal.pgen.1006697>
5. Bany IA, Dong MQ, Koelle MR (2003) Genetic and cellular basis for acetylcholine inhibition of *Caenorhabditis elegans* egg-laying behavior. *J Neurosci* 23:8060–8069. <https://doi.org/10.1523/jneurosci.23-22-08060.2003>
6. Bargmann CI (2012) Beyond the connectome: How neuromodulators shape neural circuits. *BioEssays* 34:458–465. <https://doi.org/10.1002/bies.201100185>
7. Bargmann CI (1993) Genetic and cellular analysis of behavior in *C. Elegans*. *Ann Rev Neurosci* 16:47–71. <https://doi.org/10.1146/annurev.ne.16.030193.000403>
8. Bargmann CI, Avery L (1995) Laser killing of cells in *Caenorhabditis elegans*. *Methods Cell Biol* 48:225–250. [https://doi.org/10.1016/s0091-679x\(08\)61390-4](https://doi.org/10.1016/s0091-679x(08)61390-4)
9. Bargmann CI, Horvitz HR (1991) Control of larval development by chemosensory neurons in *Caenorhabditis elegans*. *Science* 251:1243–1246. <https://doi.org/10.1126/science.2006412>
10. Bellemer A, Hirata T, Romero MF, Koelle MR (2011) Two types of chloride transporters are required for GABA(A) receptor-mediated inhibition in *C. elegans*. *EMBO J* 30:1852–1863. <https://doi.org/10.1038/emboj.2011.83>
11. Bentley B, Branicky R, Barnes CL et al (2016) The multilayer connectome of *caenorhabditis elegans*. *PLoS Comput Biol* 12:e1005283. <https://doi.org/10.1371/journal.pcbi.1005283>
12. Bretscher AJ, Busch KE, De Bono M (2008) A carbon dioxide avoidance behavior is integrated with responses to ambient oxygen and food in *Caenorhabditis elegans*. *Proc Natl Acad Sci USA* 105:8044–8049. <https://doi.org/10.1073/pnas.0707607105>
13. Bretscher AJ, Kodama-Namba E, Busch KE et al (2011) Temperature, oxygen, and salt-sensing neurons in *C. elegans* are carbon dioxide sensors that control avoidance behavior. *Neuron* 69:1099–1113. <https://doi.org/10.1016/j.neuron.2011.02.023>
14. Brundage L, Avery L, Katz A et al (1996) Mutations in a *C. elegans* Gqα gene disrupt movement, egg laying, and viability. *Neuron* 16:999–1009. [https://doi.org/10.1016/S0896-6273\(00\)80123-3](https://doi.org/10.1016/S0896-6273(00)80123-3)
15. Carnell L, Illi J, Hong SW, McIntire SL (2005) The G-protein-coupled serotonin receptor SER-1 regulates egg laying and male mating behaviors in *Caenorhabditis elegans*. *J Neurosci* 25:10671–10681. <https://doi.org/10.1523/JNEUROSCI.3399-05.2005>
16. Carrillo MA, Guillermin ML, Rengarajan S et al (2013) O₂-sensing neurons control CO₂ response in *C. elegans*. *J Neurosci* 33:9675–9683. <https://doi.org/10.1523/JNEUROSCI.4541-12.2013>
17. Chai CM, Torkashvand M, Seyedolmohadesin M et al (2022) Interneuron control of *C. elegans* developmental decision-making. *Curr Biol* 32:2316–2324.e4. <https://doi.org/10.1016/j.cub.2022.03.077>
18. Chalfie M, Sulston JE, White JG et al (1985) The neural circuit for touch sensitivity in *Caenorhabditis elegans*. *J Neurosci* 5:956–964. <https://doi.org/10.1523/jneurosci.05-04-00956.1985>
19. Chan LE, Thessen AE, Duncan WD et al (2022) The environmental conditions, treatments, and exposures ontology (ECTO) connecting toxicology and exposure to human health and beyond. *J Biomed Semant*. <https://doi.org/10.1186/s13326-023-00283-x>
20. Cheung BHH, Arellano-Carbajal F, Rybicki I, de Bono M (2004) Soluble guanylate cyclases act in neurons exposed to the body fluid to promote *C. elegans* aggregation behavior. *Curr Biol* 14:1105–1111. <https://doi.org/10.1016/j.cub.2004.06.027>
21. Choi J-H, Horowitz LB, Ringstad N (2021) Opponent vesicular transporters regulate the strength of glutamatergic neurotransmission in a *C. elegans* sensory circuit. *Nature Commun* 12:6334. <https://doi.org/10.1038/s41467-021-26575-3>
22. Chung SH, Sun L, Gabel CV (2013) In vivo neuronal calcium imaging in *C. elegans*. *JoVE*. <https://doi.org/10.3791/50357>
23. Clark DA, Gabel CV, Gabel H, Samuel ADT (2007) Temporal activity patterns in thermosensory neurons of freely moving *Caenorhabditis elegans* encode spatial thermal gradients. *J Neurosci* 27:6083–6090. <https://doi.org/10.1523/JNEUROSCI.1032-07.2007>
24. Coates JC, de Bono M (2002) Antagonistic pathways in neurons exposed to body fluid regulate social feeding in *Caenorhabditis elegans*. *Nature* 419:925–929. <https://doi.org/10.1038/nature01170>
25. Collins KM, Koelle MR (2013) Postsynaptic ERG potassium channels limit muscle excitability to allow distinct egg-laying behavior states in *Caenorhabditis elegans*. *J Neurosci* 33:761–775. <https://doi.org/10.1523/JNEUROSCI.3896-12.2013>
26. Collins KM, Bode A, Fernandez RW et al (2016) Activity of the *C. elegans* egg-laying behavior circuit is controlled by competing activation and feedback inhibition. *Elife*. <https://doi.org/10.7554/eLife.21126>
27. Court R, Costa M, Pilgrim C et al (2023) Virtual fly brain—an interactive atlas of the *Drosophila* nervous system. *Front Physiol*. <https://doi.org/10.3389/fphys.2023.1076533>
28. Emtage L, Aziz-Zaman S, Padovan-Merhar O et al (2012) IRK-1 potassium channels mediate peptidergic inhibition of *Caenorhabditis elegans* serotonin neurons via a Go signaling pathway. *J Neurosci* 32:16285–16295. <https://doi.org/10.1523/JNEUROSCI.2667-12.2012>
29. Fenk LA, de Bono M (2015) Environmental CO₂ inhibits *Caenorhabditis elegans* egg-laying by modulating olfactory neurons and evokes widespread changes in neural activity. *Proc Natl Acad Sci USA* 112:E3525–E3534. <https://doi.org/10.1073/pnas.1423808112>
30. Ghosh DD, Nitabach MN, Zhang Y, Harris G (2017) Multisensory integration in *C. elegans*. *Curr Opin Neurobiol* 43:110–118. <https://doi.org/10.1016/j.conb.2017.01.005>
31. Giglio M, Tauber R, Nadendla S et al (2019) ECO, the evidence & conclusion ontology: community standard for evidence information. *Nucleic Acids Res* 47:D1186–D1194. <https://doi.org/10.1093/nar/gky1036>
32. Good BM, Van Auker K, Hill DP et al (2021) Reactome and the gene ontology: digital convergence of data resources. *Bioinformatics* 37:3343–3348. <https://doi.org/10.1093/bioinformatics/btab325>
33. Gray JM, Karow DS, Lu H et al (2004) Oxygen sensation and social feeding mediated by a *C. elegans* guanylate cyclase homologue. *Nature* 430:317–322. <https://doi.org/10.1038/nature02714>
34. Guo ZV, Hart AC, Ramanathan S (2009) Optical interrogation of neural circuits in *Caenorhabditis elegans*. *Nat Methods* 6:891–896. <https://doi.org/10.1038/nmeth.1397>
35. Hallem EA, Sternberg PW (2008) Acute carbon dioxide avoidance in *Caenorhabditis elegans*. *Proc Natl Acad Sci USA* 105:8038–8043. <https://doi.org/10.1073/pnas.0707469105>
36. Harbinder S, Tavernarakis N, Herndon LA et al (1997) Genetically targeted cell disruption in *Caenorhabditis elegans*. *Proc Natl Acad Sci USA* 94:13128–13133. <https://doi.org/10.1073/pnas.94.24.13128>
37. Hastings J, Owen G, Dekker A et al (2016) ChEBI in 2016: Improved services and an expanding collection of metabolites. *Nucleic Acids Res* 44:D1214–D1219. <https://doi.org/10.1093/nar/gkv1031>
38. Hoogstraaten RI, van Keimpema L, Toonen RF, Verhage M (2020) Tetanus insensitive VAMP2 differentially restores synaptic and dense core vesicle fusion in tetanus neurotoxin treated neurons. *Sci Rep* 10:10913. <https://doi.org/10.1038/s41598-020-67988-2>
39. Husson SJ, Gottschalk A, Leifer AM (2013) Optogenetic manipulation of neural activity in *C. elegans*: from synapse to circuits and behaviour. *Biol Cell* 105:235–250. <https://doi.org/10.1111/boc.201200069>
40. Jarrell TA, Wang Y, Bloniarz AE et al (2012) The connectome of a decision-making neural network. *Science* 337:437–444. <https://doi.org/10.1126/science.1221762>
41. Juanes Cortés B, Vera-Ramos JA, Lovering RC et al (2021) Formalization of gene regulation knowledge using ontologies and gene ontology causal activity models. *Biochim Biophys Acta Gene Regul Mech* 1864:194766. <https://doi.org/10.1016/j.bbagr.2021.194766>
42. Kim J, Poole DS, Waggoner LE et al (2001) Genes affecting the activity of nicotinic receptors involved in *Caenorhabditis elegans* egg-laying behavior. *Genetics* 157:1599–1610. <https://doi.org/10.1093/genetics/157.4.1599>
43. Kimura KD, Miyawaki A, Matsumoto K, Mori I (2004) The *C. elegans* thermosensory neuron AFD responds to warming. *Curr Biol* 14:1291–1295. <https://doi.org/10.1016/j.cub.2004.06.060>
44. Koelle MR, Horvitz HR (1996) EGL-10 regulates G protein signaling in the *C. elegans* nervous system and shares a conserved domain with many mammalian proteins. *Cell* 84:115–125. [https://doi.org/10.1016/s0092-8674\(00\)80998-8](https://doi.org/10.1016/s0092-8674(00)80998-8)

45. Koopmans F, van Nierop P, Andres-Alonso M et al (2019) SynGO: an evidence-based, expert-curated knowledge base for the synapse. *Neuron* 103:217–234.e4. <https://doi.org/10.1016/j.neuron.2019.05.002>
46. Kopchok RJ, Ravi B, Bode A, Collins KM (2021) The sex-specific VC neurons are mechanically activated motor neurons that facilitate serotonin-induced egg laying in *C. elegans*. *Journal Neurosci Off J Soc Neurosci* 41:3635–3650. <https://doi.org/10.1523/JNEUROSCI.2150-20.2021>
47. Larsch J, Flavell SW, Liu Q et al (2015) A circuit for gradient climbing in *C. elegans* chemotaxis. *Cell Rep* 12:1748–1760. <https://doi.org/10.1016/j.celrep.2015.08.032>
48. Le Novère N, Hucka M, Mi H et al (2009) The systems biology graphical notation. *Nat Biotechnol* 27:735–741. <https://doi.org/10.1038/nbt.1558>
49. Lee RYN, Sternberg PW (2003) Building a cell and anatomy ontology of *Caenorhabditis elegans*. *Comp Funct Genom* 4:121–126. <https://doi.org/10.1002/cfg.248>
50. Leifer AM, Fang-Yen C, Gershow M et al (2011) Optogenetic manipulation of neural activity in freely moving *Caenorhabditis elegans*. *Nat Methods* 8:147–152. <https://doi.org/10.1038/nmeth.1554>
51. Li W, Kennedy SG, Ruvkun G (2003) daf-28 encodes a *C. elegans* insulin superfamily member that is regulated by environmental cues and acts in the DAF-2 signaling pathway. *Genes Dev* 17:844–858. <https://doi.org/10.1101/gad.1066503>
52. Lickteig KM, Duerr JS, Frisby DL et al (2001) Regulation of neurotransmitter vesicles by the homeodomain protein UNC-4 and its transcriptional corepressor UNC-37/groucho in *Caenorhabditis elegans* cholinergic motor neurons. *J Neurosci* 21:2001–2014. <https://doi.org/10.1523/JNEUROSCI.21-06-02001.2001>
53. Liu KS, Sternberg PW (1995) Sensory regulation of male mating behavior in *Caenorhabditis elegans*. *Neuron* 14:79–89. [https://doi.org/10.1016/0896-6273\(95\)90242-2](https://doi.org/10.1016/0896-6273(95)90242-2)
54. MacOsco EZ, Pokala N, Feinberg EH et al (2009) A hub-and-spoke circuit drives pheromone attraction and social behaviour in *C. elegans*. *Nature* 458:1171–1175. <https://doi.org/10.1038/nature07886>
55. Marder E (2012) Neuromodulation of neuronal circuits: back to the future. *Neuron* 76:1–11. <https://doi.org/10.1016/j.neuron.2012.09.010>
56. Milyaev N, Osumi-Sutherland D, Reeve S et al (2012) The Virtual Fly Brain browser and query interface. *Bioinformatics* 28:411–415. <https://doi.org/10.1093/bioinformatics/btr677>
57. Mori I, Ohshima Y (1995) Neural regulation of thermotaxis in *Caenorhabditis elegans*. *Nature* 376:344–348. <https://doi.org/10.1038/376344a0>
58. Okkema PG, Harrison SW, Plunger V et al (1993) Sequence requirements for myosin gene expression and regulation in *Caenorhabditis elegans*. *Genetics* 135:385–404. <https://doi.org/10.1093/genetics/135.2.385>
59. Pokala N, Liu Q, Gordus A, Bargmann CI (2014) Inducible and titratable silencing of *Caenorhabditis elegans* neurons in vivo with histamine-gated chloride channels. *Proc Natl Acad Sci USA* 111:2770–2775. <https://doi.org/10.1073/pnas.1400615111>
60. Ravi B, Garcia J, Collins KM (2018) Homeostatic feedback modulates the development of two-state patterned activity in a model serotonin motor circuit in *Caenorhabditis elegans*. *J Neurosci* 38:6283–6298. <https://doi.org/10.1523/JNEUROSCI.3658-17.2018>
61. Reigl M, Alon U, Chklovskii DB (2004) Search for computational modules in the *C. elegans* brain. *BMC Biol* 2:25. <https://doi.org/10.1186/1741-7007-2-25>
62. Richmond JE, Davis WS, Jorgensen EM (1999) UNC-13 is required for synaptic vesicle fusion in *C. elegans*. *Nat Neurosci* 2:959–964. <https://doi.org/10.1038/14755>
63. Sieburth D, Madison JM, Kaplan JM (2007) PKC-1 regulates secretion of neuropeptides. *Nature Neurosci* 10:49–57. <https://doi.org/10.1038/nn1810>
64. Shannon P, Markiel A, Ozier O et al (2003) Cytoscape: a software environment for integrated models of biomolecular interaction networks. *Genome Res* 13:2498–2504. <https://doi.org/10.1101/gr.1239303>
65. Shen Y, Wen Q, Liu H et al (2016) An extrasynaptic GABAergic signal modulates a pattern of forward movement in *Caenorhabditis elegans*. *Elife*. <https://doi.org/10.7554/eLife.14197>
66. Shine JM, Müller EJ, Munn B et al (2021) Computational models link cellular mechanisms of neuromodulation to large-scale neural dynamics. *Nat Neurosci* 24:765–776. <https://doi.org/10.1038/s41593-021-00824-6>
67. Shyn SI, Kerr R, Schafer WR (2003) Serotonin and Go modulate functional states of neurons and muscles controlling *C. elegans* egg-laying behavior. *Curr Biol* 13:1910–1915. <https://doi.org/10.1016/j.cub.2003.10.025>
68. Smith B, Ceusters W, Klagges B et al (2005) Relations in biomedical ontologies. *Genome Biol* 6:R46. <https://doi.org/10.1186/gb-2005-6-5-r46>
69. Speese S, Petrie M, Schuske K et al (2007) UNC-31 (CAPS) is required for dense-core vesicle but not synaptic vesicle exocytosis in *Caenorhabditis elegans*. *J Neurosci Off J Soc Neurosci* 27:6150–6162. <https://doi.org/10.1523/JNEUROSCI.1466-07.2007>
70. Srinivasan J, von Reuss SH, Bose N et al (2012) A modular library of small molecule signals regulates social behaviors in *Caenorhabditis elegans*. *PLoS Biol* 10:1–14. <https://doi.org/10.1371/journal.pbio.1001237>
71. Susoy V, Hung W, Witvliet D et al (2021) Natural sensory context drives diverse brain-wide activity during *C. elegans* mating. *Cell* 184:5122–5137.e17. <https://doi.org/10.1016/j.cell.2021.08.024>
72. Sweeney ST, Broadie K, Keane J et al (1995) Targeted expression of tetanus toxin light chain in *Drosophila* specifically eliminates synaptic transmission and causes behavioral defects. *Neuron* 14:341–351. [https://doi.org/10.1016/0896-6273\(95\)90290-2](https://doi.org/10.1016/0896-6273(95)90290-2)
73. Tanis JE, Moresco JJ, Lindquist RA, Koelle MR (2008) Regulation of serotonin biosynthesis by the G proteins Gao and Gaq controls serotonin signaling in *Caenorhabditis elegans*. *Genetics* 178:157–169. <https://doi.org/10.1534/genetics.107.079780>
74. The Gene Ontology Consortium (2021) The gene ontology resource: enriching a GOld mine. *Nucleic Acids Res* 49:D325–D334. <https://doi.org/10.1093/nar/gkaa1113>
75. Thomas PD, Hill DP, Mi H et al (2019) Gene ontology causal activity modeling (GO-CAM) moves beyond GO annotations to structured descriptions of biological functions and systems. *Nat Genet* 51:1429–1433. <https://doi.org/10.1038/s41588-019-0500-1>
76. Trent C, Tsuing N, Horvitz HR (1983) Egg-laying defective mutants of the nematode *Caenorhabditis elegans*. *Genetics* 104:619–647. <https://doi.org/10.1093/genetics/104.4.619>
77. Waggoner LE, Zhou GT, Schafer RW, Schafer WR (1998) Control of alternative behavioral states by serotonin in *Caenorhabditis elegans*. *Neuron* 21:203–214. [https://doi.org/10.1016/S0896-6273\(00\)80527-9](https://doi.org/10.1016/S0896-6273(00)80527-9)
78. Wen X, Chen Y-H, Li R et al (2020) Signal decoding for glutamate modulating egg laying oppositely in *Caenorhabditis elegans* under varied environmental conditions. *IScience* 23:101588. <https://doi.org/10.1016/j.isci.2020.101588>
79. Zhang M, Chung SH, Fang-Yen C et al (2008) A self-regulating feed-forward circuit controlling *C. elegans* egg-laying behavior. *Curr Biol* 18:1445–1455. <https://doi.org/10.1016/j.cub.2008.08.047>

Publisher's Note

Springer Nature remains neutral with regard to jurisdictional claims in published maps and institutional affiliations.

Submit your manuscript to a SpringerOpen[®] journal and benefit from:

- Convenient online submission
- Rigorous peer review
- Open access: articles freely available online
- High visibility within the field
- Retaining the copyright to your article

Submit your next manuscript at ► [springeropen.com](https://www.springeropen.com)